

## Back Issue of Military Postal History Society 'Bulletin': (War Cover Philatelist Sep 1941)

Back issues of the Military Postal History Society 'Bulletin' are now available. The issues available span the period from 1937 to 2022. The MPHS is a non-profit organization for philatelists and stamp collectors interested in the collecting and studying of the postal aspects of all wars and military actions of all countries, including soldiers' campaign covers, naval mail, occupation and internment covers, patriotics, propaganda, V-mail, censorship and similar related material.

You are encouraged to join the MPHS to realize the additional benefits of membership. See: <http://militaryphs.org/membership>

### **List of Index Items for This Publication**

*Postmark A51, 52*

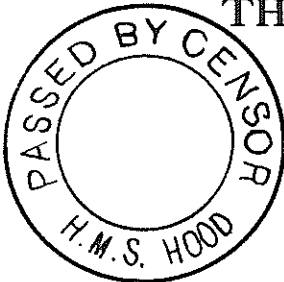
*Changes Made in Postal Service on US Naval Vessels July 1 1940 to Jun 30, 1941*

*US Naval Vessels Having Post Offices on July 1, 1940*

*US Naval Corner Cards (Civil war to WWII)*

*French WW I Naval Postmarks*

*British Navy Black Honor Envelope (WWII)*

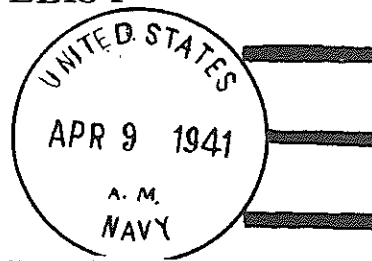


# THE WAR COVER PHILATELIST

An Occasional Publication

Edited and Published  
by  
**DEL F NORONA**  
MOUNDSVILLE, W. VA.

Subscription Price: One Dollar



Vol. 4

September, 1941

Whole No. 1819

## THE ROYAL NAVY "BLACK" HONOUR ENVELOPE

\*\*\*\*\*

A black "Honour" envelope is now being used by the British Navy with the identical wording which appeared on a similar blue World War I item. An examination of some 20 of these

S 1324

**ROYAL**

C & Co (B) Ltd.

**NAVY**

[Crown Copyright Reserved]

This envelope must not be used for coin or valuables. It cannot be accepted for registration.

**NOTE :-**

Correspondence in this envelope need not be censored on board. The contents are liable to examination by the Chief Postal Censor.

The following Certificate must be signed by the writer :-

I certify on my honour that the contents of this envelope refer to nothing but private and family matters.

Signature }  
Name only }

*J. Irving*

[Several letters may be forwarded in this Cover, but these must be all from the same writer.]

Address:—*Mrs. J. Irving*

*Borassie 9<sup>th</sup>*

*Whitley Wood Lane*

*Reading Berks.*

black envelopes shows: They are not postmarked, and the envelopes as they go through the mails give no clue as to the names of the ships or dates of use. Two settings are noted, the one shown, and another with "C & Co(B) Ltd." omitted from the upper left corner.

So there are now Green, Blue, and Black envelopes. Vice-Pres. Eugene Carey is making a detailed study of U.S. Blue envelopes, and solicits for inspection all your AEF items.

An HMS Hood censor mark was illustrated in our March, 1940, issue. Secretary J.P. Klinger submits another type of censor. We hope some time to illustrate an item from the Bismark, -- the Hood Avenged!

Many U.S. naval vessels are now using postmarks with the legend U.S. NAVY. This was done during the World War I, as will be noted from the type chart printed with this issue. Not all naval vessels have yet adopted this U.S. NAVY postmark. A somewhat unusual one is illustrated, submitted by Member D.C. Bartley.

-----  
 THE WAR COVER CLUB  
 \*\*\*\*\*

## New members:

- 67 Dorothy R. Wilson, 3726 Connecticut Ave., Wash. D.C. (General)  
 68 C.A. Anderson, 1120-12th St. E., Saskatoon, Sask. (Mil. Camps.)  
 69 W.W. Vaughan, 3109 Newton Ave., Long Island City, N.Y.  
 70 Lieut. Comdr. H.H. Kretzler, Naval Air Sta., Seattle, Wash.  
 71 John H. Webb, 603 Eoylston St., Boston, Mass.  
 72 Orville L. Stringham, 533 Chenango St., Binghamton, N.Y.  
 73 Myrna Dunham Jung, 45 Norman Rd., Melrose, Mass. (World War 2)  
 74 Arthur F. Black, 144 Providence Rd., Charlotte, N.C. (WW 1 & 2)  
 75 J.H. Beerman, 16 Irving Pl., Woodmere, L.I., N.Y. (Dealer.)  
 76 Capt. Frank Staff, Internment Camp, Angler, Ont. (British.)  
 77 Wallace W. Knox, Athens Athletic Club, Oakland, Cal.  
 78 K.W. Shaw, Main St., Stanhope, N.J. (World War 2)  
 79 Robt. L. Crant, 7021 Clover Lane, Stonehurst, Upper Darby, Pa.)  
 80 W. Worth Davis, Tillsonburg, Ont., Canada (WW 2) (Censor All wars)  
 81 Chester J. Mikucki, 1844 N. Winchester Ave. Chicago, Ill. (WW1&2)  
 82 L. Cabot Eriggs, West Neck Ave., Huntington, L.I. N.Y. (Pre-WW2)  
 83 Georg J. Zimmerman, 657-42nd St., Des Moines, Iowa (W.W.2)  
 84 J. Holmdahl, 630 Apgar St., Oakland, Calif. (W.W.2)  
 85 Don Houseworth, The Cover Collector, St. Joseph, Mo. (Publisher  
 86 Leon J. Pantell, Biltmore Hotel, Oklahoma City, Okla. (Censor All  
 87 E.F. Pollack, 2015 S.W. Tenth Ave. Portland, Oreg. (All Wars

The healthy increase in Club membership is due to the good work of Mr. George Hahn. George has had so many demands on his time in connection with many philatelic activities, including the Sales Dept., that he finds it necessary to discontinue publication of the W.C.C. Bulletin. The same material will be edited by him and published in the Cover Collector, a Houseworth publication, and sent to all members.

An informal War Cover meeting will be held at the Lord Baltimore Hotel, Baltimore, Friday afternoon, August 22nd, during the APS Convention. Come for the entire week if possible; bring your collection and duplicates for an enjoyable time.

We love these current Defense patriotics, even collector-made items, but have never cared for printed pictorial Navy first-day covers. But how to distinguish between the two?

THIS IS NOT OUR WAR, so stay out at any cost. So say many sincere, loyal Americans. Let's not call each other names but face the facts. Denmark, Norway, &c. "stayed out," what happened! Hitler has given ample evidence by word and deed that nothing will satisfy him short of world conquest. If England goes under will the Nazis suddenly become good? More likely we will soon have a defensive war (economic, military, or both) on our hands. Can we take the chance? By the Lend-Lease Bill we have taken the offense economically, but what's the use of shipping arms if they go to the bottom? Use our Navy to convoy and shoot, too, if necessary. We should do our part and help put out the fire while it is still in the next block, not wait till it is next door. Stop Hitler cold now--whatever the cost; tomorrow may be too late.

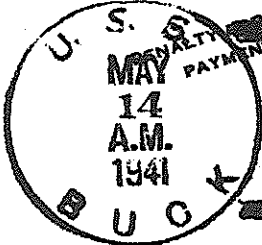
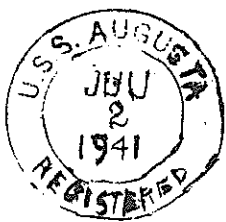
I know this is not philately and some readers may criticize me for using this space about a controversial subject in a hobby magazine, but I honestly believe a national emergency is upon us and I just can't help but speak up.

U.S. NAVAL VESSELS HAVING POST OFFICES ON JULY 1, 1940

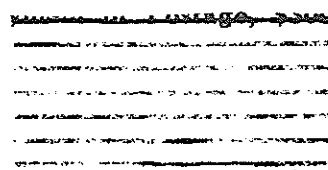
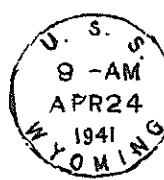
\*\*\*\*\*

x - Postal service discontinued between 7/1/40 and 6/30/41.

Achushnet	Breckinridge	Dent	Helm
Alden	Breese	Detroit	Henderson
Algorma	Bridge	Dewey	Henley
Altair	Brooklyn	Dickerson	Herbert
Anderson	Brooks	Dixie	Herndon - x
Antares	Broome	Dobbin	Heron
Arctic	Buchanan - x	Dolphin	Holland
Ard-1	Buck	Dorsey	Honolulu
Argonaut	Bulmer	Downes	Hopewell - x
Argonne	Burrows, Wm. Ward	Drayton	Hopkins
Arizona	Bushnell x	Dunlap	Houston
Arkansas	Cachalot	Dupont	Hovey
Asheville	California	Edsall	Hughes
Astoria	Canopus	Edwards - x	Hulbert
Augusta	Capella	Edwards, John D.	Hull
Aulick - x	Case	Ellet	Humphreys
Avocet	Cassin	Elliot	Hunt - x
Aylwin	Chandler	Ellis	Idaho



HONOLULU  
T.H.



Babbitt	Charleston	Enterprise	Indianapolis
Badger	Chaumont	Erie	Isabel
Badger, Geo. E.	Cherokee	Evans - x	James, Reuben
Bagaduce	Chester	Fairfax - x	Jarvis
Bagley	Chicago	Falcon	Jones, Jacob
Bailey - x	Childs	Fanning	Jones, Paul
Bainbridge	Cimarron	Farragut	Jouett
Balch	Cincinnati	Finch	Kalmia
Bancroft - x	Clark	Flusser	Kanawha
Barker	Claxton - x	Foote - x	Kane
Barney	Cole	Ford, John D.	Kennison
Barry	Colorado	Fox	Kilty
Bear	Concord	Gamble	King
Beaver	Conyngham	Gannett	Kingfisher
Benham	Cormorant	Gilmer	Lamberton
Bernadon	Crane	Goff	Lamson
Biddle	Craven	Goldsborough	Lang
Bittern	Crosby	Gold Star	Langley
Black Hawk	Crowninshield-x	Grebe	Lapwing
Blakeley	Cummings	Greer	Lark
Blue	Cushing	Gridley	Laub - x
Bobolink	Cuttlefish	Guam - x	Lawrence
Boggs	Cuyama	Hale - x	Lea
Boise	Dahlgren	Hamilton	Leary
Borie	Dale	Hammann	Lexington
Bowditch	Dallas	Hannibal	Litchfield
Branch - x	Davis	Haraden - x	Long
Brant	Decatur	Hatfield	Louisville
Brazos	Denebola	Helena	Luzon

MacDonough	Partridge	Sailfish	Tattnall
MacKenzie - x	Patoka	St. Louis	Teal
MacLeish	Patterson	Salinas	Tennessee
Maddox - x	Peary	Salmon	Tern
Mahan	Pecos	SaltLake City	Texas
Mallard	Pelican	Sampson	Thatcher - x
Manley	Penguin	Sandpiper	Thrush
Marblehead	Pennsylvania	Sands	Tippecanoe
Maryland	Pensacola	San Francisco	Tracy
Mason - x	Perch	Saratoga	Trenton
Maury	Perkins	Sargo	Trever
Mayrant	Permit	Satterlee - x	Trinity
McCall	Perry	Saury	Trippe
McCalla - x	Phelps	Savannah	Triton
McCook - x	Philadelphia	Schenck	Truxtum
McCormick	Philip - x	Sculpin	Tucker
McDougal	Phoenix	Seadragon	Tulsa
McLanahan - x	Pickerel	Seagull	Turkey
Meade - x	Pigeon	Seal	Tuscaloosa
Medusa	Pike	Sea Lion	Tutuila
Melville	Pillsbury	Sea Raven	Twiggs - x
Memphis	Pinola	Sea Wolf	Umpqua
Milwaukee	Platte	Selfridge	Upshur
Mindanao	Plunger	Seminole	Upshur, Abel P. -x
Minneapolis	Pollack	Semmes	Utah
Mississippi	Pompano	Sepulga	Vega
Moffett	Pope	Shark	Vestal
Monaghan	Porpoise	Shaw	Vincennes
Montgomery	Porter	Shubrick - x	Vireo
Morris	Portland	Sicard	Wainwright
Mugford	Potomac	Simpson	Walke
Mustin	Preble	Sims	Ward, Aaron - .x
Napa	Preston	Sirius	Warrington
Narwhal	Preston, Wm. B.	Skipjack	Wasmuth
Nashville	Pruitt	Smith	Wasp
Nautilus	Pyro	Snapper	Waters
Navajo	Quail	Somers	Welles - x
Neches	Quincy	Sonona	West Virginia
Neosho	Rail	Southard	Whipple
Nevada	Raleigh	Spearfish	Whippoorwill
New Mexico	Ramapo	Spica	Whitney
New Orleans	Ramsay	Stack	Wichita
New York	Ranger	Sterett	Wickes - x
Nitro	Rapidan	Stewart	Widgeon
Noa	Rathburne	Stingray	Williams - x
Northampton	Reid	Sturgeon	Williamson
Oahu	Reina Mercedes	Sturtevant	Wilson
O'Brien	Relief	Swan	Winslow
Oglala	Rhind	Swasey - x	Wood, Welborn C. -x
Oklahoma	Richmond	Swordfish	Woodcock
Omaha	Robin	Talbot	Worden
Ontario	Rodgers - x	Talbot, Ralph	Wright
Oriole	Roe	Talbott, J. Fred	Wyoming
Ortolan	Roper	Tambor	Yarnall - x
Overton	Rowan	Tanager	Yorktown
Owl	Russell	Tarbell	Yukon
Parrott	S-28	Tarpon	Zane

-----  
 CHANGES MADE IN POSTAL SERVICE ON U.S. NAVAL VESSELS BETWEEN  
 JULY 1, 1940, and JUNE 30, 1941  
 \*\*\*\*\*

Abbreviations: Chgd.-Changed; Disc.-Discontinued; Est.-Established; Reest.-Reestablished.

Dates of establishment, &c., taken from the daily Postal Bulletin. Postmarking of mail was often not actually commenced or discontinued on the dates officially given.

# - Destroyers exchanged for British Naval bases.

- |   |  |
|---|--|
| #Abbot Est. Aug 5-40; Disc. Sep. 10-40. Now HMS Charlestown | #Evans Disc. Oct. 5-40<br>Now HMS Mansfield                    |
| Albemarle Est. Dec. 20-40                                   | #Fairfax Disc. Nov. 1-40<br>Now HMS Richmond                   |
| Allen Est. Sep. 23-40                                       | #Foote Est. Jul. 25-40; Disc. Sep. 12-40. Now HMS Roxborough   |
| Arcturus Est. Nov. 20-40                                    | Fuller Reest. Mar. 1-41  |
| Argus Est. May 7-41   | Gar Est. Apr. 14-41  |
| #Aulick Disc. Sep. 13-40<br>Now HMS Burnham                 | Gillis Est. Apr. 24-41   |
| #Bailey Disc. Oct. 17-40<br>Now HMS Reading                 | Gleaves Est. Aug. 5-40   |
| Ballard Est. Mar. 12-41                                     | Grampus Est. May 23-41   |
| #Bancroft Disc. Jul. 8-40<br>Now HMS St. Francis            | Grayback Est. Jun. 30-41                                       |
| Barnett Est. Nov. 11-40                                     | Grayling Est. Mar. 26-41                                       |
| Barracuda Reest. Sep. 16-40                                 | Grayson Est. Feb. 14-41  |
| Bass Reest. Sep. 22-40                                      | Greene Est. Apr. 28-41   |
| Belknap Reest. Nov. 22-40                                   | Gregory Reest. Nov. 18-40                                      |
| Benson Est. Aug. 15-40                                      | Grenadier Est. May 1-41  |
| Biddle, Wm. P. Est. Apr. 1-41                               | Guam Designation chgd. to<br>USS Wake Jan. 23-41               |
| Bonita Reest. Sep. 26-40                                    | Gudgeon Est. Apr. 21-41  |
| Boreas Est. Mar. 17-41                                      | Gwinn Est. Jan. 27-41  |
| #Branch Disc. Sep. 25-40<br>Now HMS Beverley                | #Hale Disc. Sep. 4-40<br>Now HMS Caldwell                      |
| #Buchanan Disc. Sep. 6-40<br>Now HMS Campbelltown           | #Haraden Disc. Sep. 13-40<br>Now HMS Columbia                  |
| Bushnell Designation chgd. to<br>USS Sumner Aug. 23-40      | #Herndon Disc. Sep. 9-40<br>Now HMS Churchill                  |
| Castor Est. Mar. 12-41                                      | Heywood Est. Jan. 13-41  |
| Chew Reest. Jan. 15-41                                      | Hogan Est. Sep. 30-40  |
| Chewink Reest. Jan. 8-41                                    | #Hopewell Reest. Jul. 15-40;<br>Disc. Sep. 11-40; Now HMS Bath |
| #Claxton Disc. Oct. 21-40<br>Now HMS Salisbury              | Howard Reest. Oct. 25-40                                       |
| Clemson Reest. Jul. 12-40                                   | Hughes, Chas. F. Est. Oct. 1-40                                |
| Colhoun Est. Apr. 14-41                                     | #Hunt Disc. Sep. 25-40<br>Now HMS Broadway                     |
| #Crowninshield Disc. Sep. 7-40<br>Now HMS Chelsea           | Ingram, Osmond Reest. Nov. 22-40                               |
| Curtiss Est. Nov. 25-40                                     | Iuka Est. Feb. 1-41  |
| #Doran Est. Aug. 5-40; Disc. Sep. 13-40; Now HMS St. Mary's | Jones, Hilary P. Est. Sep. 7-40                                |
| Dubuque Reest. Mar. 1-41                                    | Kaskaskia Est. Mar. 10-41                                      |
| Eagle No. 19 Est. Jun. 25-41                                | Kaweah Reest. Mar. 10-41                                       |
| Eagle No. 38 Est. May 7-41                                  | Kearny Est. Oct. 1-40  |
| Eagle No. 55 Est. Apr. 25-41                                | Kewaydin Reest. Oct. 1-40                                      |
| Eberle Est. Jan. 8-41                                       | Kilauea Est. Jun. 23-41  |
| Edison Est. Feb. 18-41                                      | Lansdale Est. Sep. 17-40                                       |
| #Edwards Disc. Sep. 15-40<br>Now HMS Buxton                 | Laramie Reest. Mar. 19-41                                      |
| Elliott, Geo. F. Est. Jan. 11-41                            | Lassen Est. Mar. 1-41  |
| Ericsson Est. Apr. 14-41                                    | #Laub Disc. Sep. 25-40<br>Now HMS Burwell                      |
|   | Lee, Harry Est. Feb. 13-41                                     |

- 
- |   |   |
|---|---|
| Little Reest. Nov. 15-40  | Schley Reest. Nov. 18-40  |
| Livermore Est. Nov. 18-40                                       | Sciota Reest. Feb. 1-41   |
| Long Island Est. Jun. 2-41                                      | #Shubrick Disc. Oct. 31-40                                      |
| Ludlow Reest. Mar. 22-41  | Now HMS Ripley  |
| #MacKenzie Disc. Aug. 17-40                                     | Siren Est. Mar. 3-41  |
| Now HMS Annapolis   | Stansbury Reest. Oct. 23-40                                     |
| #Maddox Reest. Jul. 14-40; Disc. Sep. 11-40; Now HMS Georgetown | Stringham Est. Apr. 17-41                                       |
| Madison Est. Sep. 5-40  | Summer (was USS Bushnell) Re-designated USS Summer Aug. 23-40   |
| #Mason Disc. Sep. 20-40   | Swanson Est. May 29-41  |
| Now HMS Broadwater  | #Swasey Disc. Oct. 31-40  |
| Mattole Est. Dec. 5-40  | Now HMS Rockingham  |
| Mayo Est. Oct. 24-40  | Sylph Est. Dec. 2-40  |
| #McCalla Disc. Oct. 6-40  | Tautog Est. Jul. 3-40   |
| Now HMS Stanley   | #Thatcher Disc. Sep. 13-40                                      |
| McCawley Est. Oct. 14-40  | Now HMS Niagara   |
| #McCook Disc. Sep. 23-40  | #Thomas Reest. Aug. 21-40; Disc. Sep. 13-40; Now HMS St. Albans |
| Now HMS St. Croix   | Thornton Est. Apr. 1-41   |
| McFarland Reest. Jan. 25-41                                     | Thresher Est. Aug. 27-40  |
| McKean Est. Mar. 6-41   | Triton Est. Aug. 15-40  |
| #McLanahan Disc. Sep. 23-40                                     | Tuna Est. Jan. 27-41  |
| Now HMS Bradford  | #Twiggs Disc. Sep. 30-40  |
| #Meade Disc. Oct. 31-40   | Now HMS Leamington  |
| Now HMS Ramsay  | Undaunted Est. Nov. 8-40  |
| Meredith Reest. Apr. 3-41                                       | #Upshur, Abel P. Disc. Sep. 9-40                                |
| Monssen Est. May 7-41   | Now HMS Clare   |
| Neville Est. May 15-41  | Vixen Reest. Mar. 1-41  |
| Niagara Reest. Feb. 1-41  | Vulcan Reest. Jul. 23-41  |
| Niblack Est. Sep. 5-40  | Wake (was USS Guam) Redesignated USS Wake Jan. 23-41            |
| Nicholson Reest. Jun. 3-41                                      | Ward Est. Mar. 12-41  |
| North Carolina Est. Apr. 9-41                                   | #Ward, Aaron Disc. Sep. 4-40                                    |
| Osprey Reest. Feb. 26-41  | Now HMS Castleton   |
| Palmer Reest. Oct. 28-40  | Washington Est. May 15-41                                       |
| PC-451 Est. Oct. 9-40   | Wassuc Est. Jun. 25-41  |
| PC-509 Est. Mar. 3-41   | #Welles Disc. Sep. 9-41   |
| #Philip Disc. Oct. 8-40   | Now HMS Cameron   |
| Now HMS Lancaster   | Wharton Est. Feb. 3-41  |
| Plunkett Est. Jul. 29-40  | #Wickes Disc. Oct. 6-40   |
| Pocomoke Est. Jun. 20-41  | Now HMS Montgomery  |
| Polaris Est. May 1-41   | Wilkes Est. May 12-41   |
| Pollux Est. May 6-41  | #Williams Disc. Sep. 13-40                                      |
| Prairie Est. Aug. 16-40   | Now HMS St. Clair   |
| Raven Est. Feb. 24-41   | #Wood, Welborn C. Disc. Sep. 9-40                               |
| Regulus Est. Dec. 26-40   | Now HMS Chesterfield  |
| #Rodgers Disc. Oct. 13-40                                       | Woolsey Est. May 27-41  |
| Now HMS Sherwood  | #Yarnall Disc. Sep. 28-40                                       |
| Sabine Est. Nov. 29-40  | Now HMS Lincoln   |
| Sacramento Reest. Feb. 24-41                                    | Zircon Est. Jun. 27-41  |
| Salamonie Est. Jun. 2-41  | ###-Data as to renaming of ex-                                  |
| Sangamon Est. Jan. 13-41  | changed U.S.-British destroyers                                 |
| Santee Est. Feb. 1-41   | from <u>Phil. Gossip</u> , Feb. 15, 1941 .                      |
| Sapelo Reest. Oct. 1-40   |   |
| #Satterlee Disc. Eff. Sep. 23-40                                |   |
| Now HMS Belmont   |   |

-----

CENSORED COVERS--India, Jamaica, Occupied Netherlands, Newfoundland-25c; Gold Coast, Occupied France, Palestine-30c; Dutch East Indies, Curacao, Surinam-35c; and Inini, Malta-50c.  
K.W.SHAW, Stanhope, N.J. (Member W.C.C. No. 78)

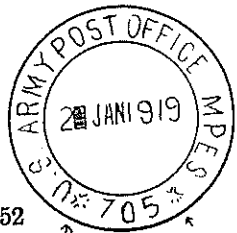
A.E.F. TYPE A-51 POSTMARKS  
\*\*\*\*\*  
(Continued from p.22)

- AP0 791 (81st Division)  
Early 17 NOV 1918 Only specimen seen.
- AP0 793 (7th Division)  
Early 27 NOV 1918 (H.K.Robinson) Many intermediate dates.  
Late 11 AVR 1919
- AP0 796 (36th Division)  
Early 14 FEV 1919 One intermediate date.  
Late -7 MAR 1919
- AP0 798 (Mesves-sur-Loire)  
Early 9 NOV 1918 Only specimens seen.  
Late 10 NOV 1918

- o -

A.E.F. TYPE A-52 POSTMARKS  
\*\*\*\*\*

Similar to Type A-51, but with "cross road" ornaments on either side of the APO number.  
Earliest known use: 17 OCT 1918 (APO 701)  
Latest known use: -3 FEV 1919 (APO 705)



- AP0 701 (St.Nazaire)  
Early 17 OCT 1918 Several intermediate dates.  
Late 18 JAN 1919
- AP0 704 (le Valdahon)  
Early 18 Nov 1918\*(Mrs.J.W.Williams) Several intermediate dates.  
Late 28 JAN 1919 (H.Artist)
- AP0 705 (Bordeaux)  
Early 4 DEC 1918 Several intermediate dates.  
Late -3 FEV 1919
- AP0 706 (Chaumont)  
Early 29 NOV 1918 Two intermediate dates.  
Late 17 JAN 1919
- AP0 762 (le Mans)  
Early 16 OCT 1918 (H.Artist) Only specimens seen.  
Late 26 OCT 1918 Purple
- AP0 763 (37th Division)  
Early 2 JAN 1919 Two other specimens seen.  
Late 19 JAN 1919

- o -

FRENCH WORLD WAR I NAVAL POSTMARKS  
\*\*\*\*\*

Only three general types were used, with the varieties listed below:

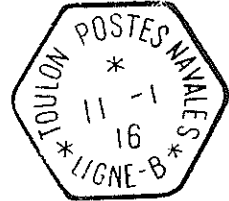
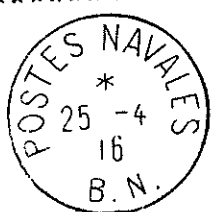


Fig. 1 - POSTES NAVALES/LIGNE A (or B);  
 Fig. 2 - MEDIT C (D or E); MED. C.1 (or G); F only;  
 Fig. 3 - With A and B; TOULON in different shape letters(A-B)



U.S. NAVAL CORNER CARDS  
\*\*\*\*\*

We wonder if anyone is collecting U.S. Naval war-time corner cards--not collector-made patriotic, but covers prepared strictly for use in the regular course of business.

The printing or handstamping is usually plainly utilitarian. The general aversion by collectors to over-sized covers must be overcome in collecting these items, for practically all are legal size. A few are listed

-- Civil War --

CONFEDERATE STATES  
NAVY DEPARTMENT  
Mississippi River Ram Flotilla OFFICE OF ORDERS AND DETAIL  
OFFICIAL BUSINESS Official Business  
NAVAL OFFICE  
(Coat of Arms) CONFEDERATE STATES, NAVY DEPARTMENT  
Custom House-Boston OFFICE OF PROVISION AND CLOTHING  
OFFICIAL BUSINESS

-- Spanish-American War --

U.S.S. KENTUCKY (Picture of Ship)  
ASIATIC STATION RETURN TO  
FLAGSHIP OHIO  
SAILOR'S LETTER ASIATIC STATION  
U.S.S. Olympia  
B.P. Lambertson Sailors Letter  
CAPTAIN U.S. NAVY U.S.S. Yorktown

-- World War I --

U.S. NAVAL FORCES  
OPERATING IN EUROPEAN WATERS U.S. NAVAL AIR STATION  
PATROL SQUADRON BASED ON GIBRALTAR COCO SOLO, CANAL ZONE  
OFFICIAL BUSINESS  
UNITED STATES ATLANTIC FLEET  
THE COMMANDER IN CHIEF U.S. NAVAL STATION  
CAVITE, P.I.  
SUBMARINE FORCE, U.S. ATLANTIC FLEET OFFICIAL BUSINESS  
U.S.S. CHICAGO, FLAGSHIP

-- World War II (illustrations) --

NAVY DEPARTMENT NAVY DEPARTMENT NAVY DEPARTMENT  
U. S. SUBMARINE BASE, U.S.S. TEXAS U. S. NAVAL AIR STATION  
NEW LONDON, CONN. %Postmaster, New York, N.Y. CORPUS CHRISTI, TEXAS  
OFFICIAL BUSINESS OFFICIAL BUSINESS OFFICIAL BUSINESS

NAVY DEPARTMENT

NAVAL MINE WARFARE SCHOOL  
YORKTOWN, VIRGINIA

NAVY DEPARTMENT

U. S. S. CURTISS  
CARE OF POSTMASTER  
NEW YORK, N. Y.

OFFICIAL BUSINESS

NAVY DEPARTMENT

OFFICE OF CHIEF OF NAVAL OPERATIONS  
WASHINGTON D. C.  
OFFICIAL BUSINESS

NAVY DEPARTMENT

TRAIN, U. S. ATLANTIC FLEET  
U. S. S. WYOMING, Flagship  
Care Postmaster, New York, N. Y.

OFFICIAL BUSINESS