

**RUSSIAN REVOLUTION & CIVIL WAR PERIOD  
1917 - 1920**

1918 .. 'A.E.F. Siberia' Mail

In March 1918, during the Russian Civil War, 60-80,000 Czech prisoners-of-war revolted, deserted, and fought their way across Siberia to Vladivostok, occupying various cities along the trans-Siberian northern rail route and controlling a large part of the railway itself.

**IN AUGUST 1918, PRESIDENT WILSON ORDERED AMERICAN TROOPS TO VLADIVOSTOK WITH THE OBJECTIVE OF SECURING THE RAILWAY LINE AND SUBSEQUENT USE FOR EVACUATION OF THE CZECH REFUGEE-SOLDIERS TO TRIEST, ITALY, BETWEEN FEBRUARY-NOVEMBER 1920.**

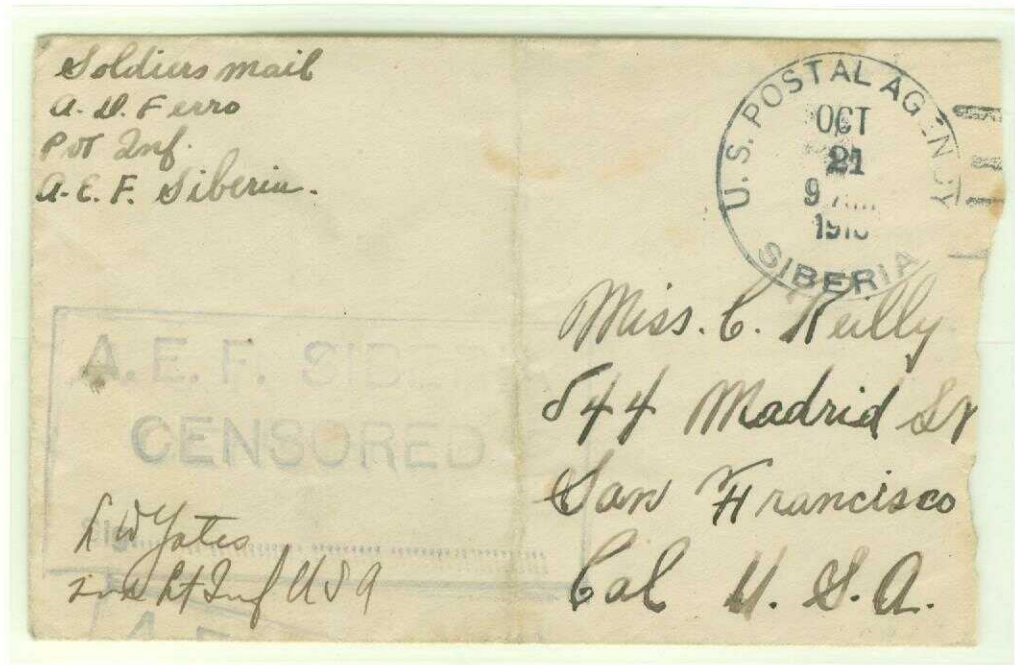
'U.S. POSTAL AGENCY  
IN SIBERIA'  
MAIL FROM VLADIVOSTOK  
TO SAN FRANCISCO

21 OCTOBER 1918

AEF Censored free-frank soldier's mail, postmarked at "Vladivostok" without route endorsement, sent to San Francisco, California.

Route:  
Vladivostok-San Francisco

4<sup>th</sup> day of use of this postmark.  
Large Rubber Handstamp.  
Postmark Use:  
18 October -  
17 December 1918



'U.S. POSTAL AGENCY  
IN SIBERIA' MAIL  
FROM  
VLADIVOSTOK TO  
OREGON

14 MAY 1919

AEF Censored free-frank soldier's 'YMCA' cover, postmarked at Vladivostok, without route endorsement, sent to Riddle, Oregon.

Route:  
Vladivostok-San Francisco-Oregon

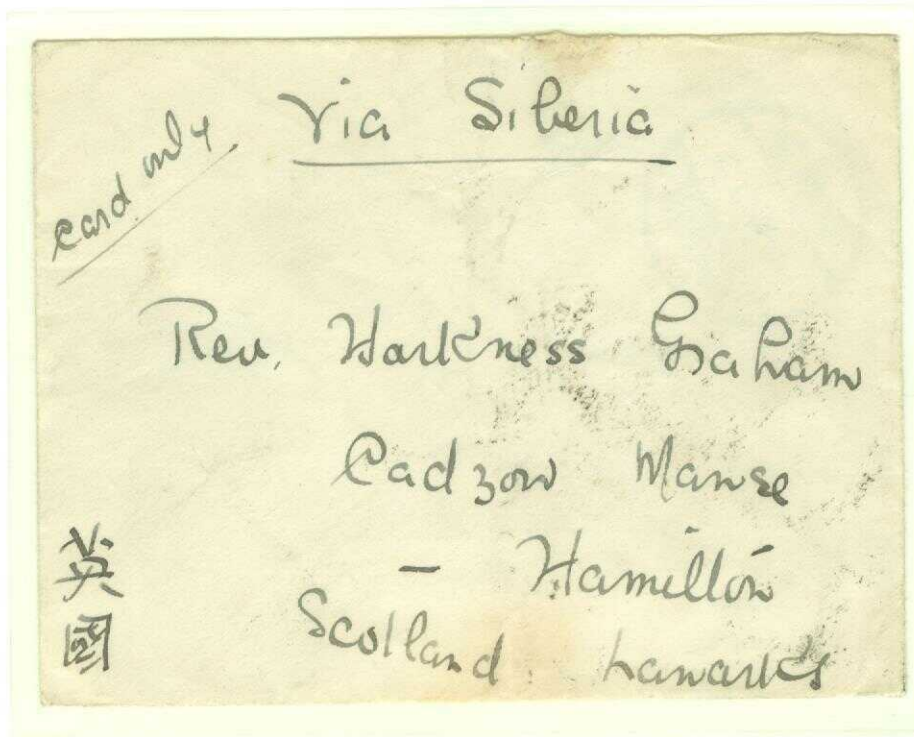
Small Steel Handstamp.  
Postmark Use:  
20 October 1918 -  
14 April 1920



RUSSIAN REVOLUTION & CIVIL WAR PERIOD  
1917 - 1920

1918 .. China-Scotland  
Missionary Mail

MAIL MOVEMENT WESTWARD WAS POSSIBLE BY LATE  
DECEMBER 1918 OVER THE SOUTHERN RAIL NETWORK  
CONNECTING THE CHINESE EASTERN & MANCHURIAN  
RAIL LINES AT MANCHOULI WITH THE  
TRANS-SIBERIAN LINE  
BETWEEN IRKUTSK-OMSK-ST. PETERSBURG,



LATE 1918 CHINA-ORIGIN MAIL TO SCOTLAND 'VIA SIBERIA'  
& BY SEA FROM ST. PETERSBURG

10 DECEMBER 1918  
(Chinese Post Office)

Printed-Matter Card (in an open envelope)  
missionary mail, postmarked at Shihu, China,  
with route endorsement  
"Via Siberia"  
sent to Hamilton, Scotland, United Kingdom

Transit Postmark:  
(Reverse)  
"Harbin, 11 December 1918"

Probable Route:  
Shihu-Peking-Mukden-Harbin-Manchouli-Irkutsk-  
Omsk-St. Petersburg..(by sea) to Scotland

4 Cents..  
(Open envelope) postcard-rate



Reverse

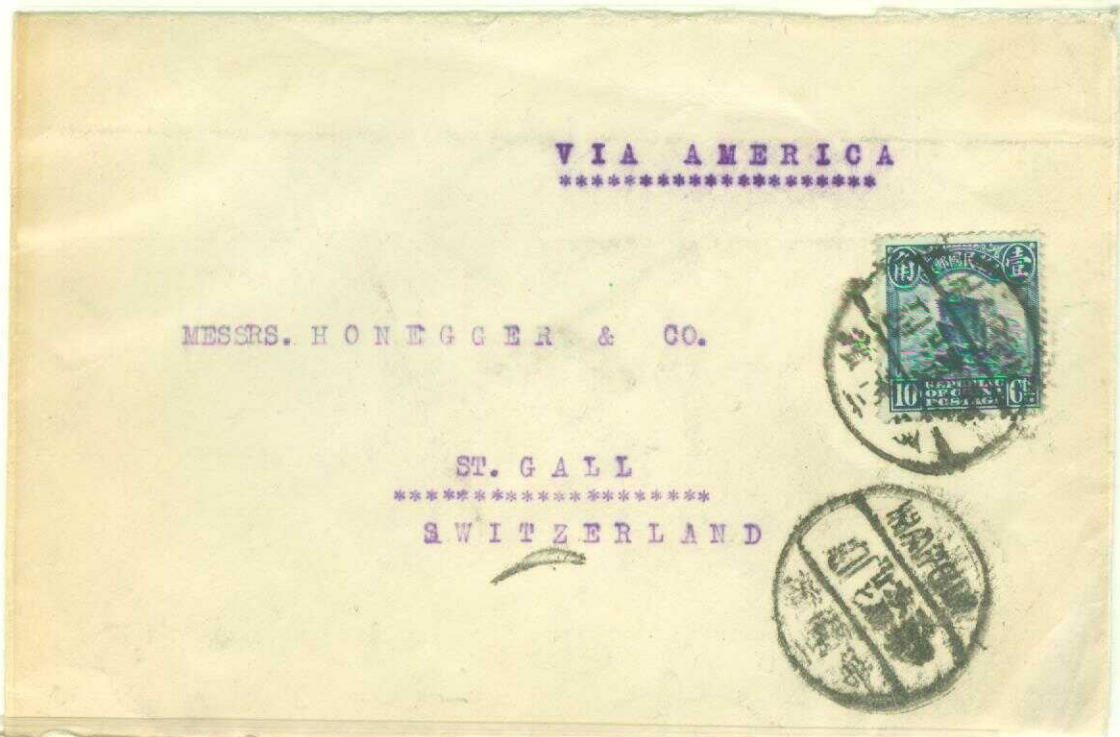
**RUSSIAN REVOLUTION & CIVIL WAR PERIOD  
1917 - 1920**

**1918-19 .. China-Switzerland  
Mail 'Via Suez' or 'Via America'**

**AS A RESULT OF THE  
CONFLICT IN RUSSIA  
AND NON-OPERATION  
OF THE TRANS-SIBERIAN  
ROUTE TO EUROPE,  
MAIL WAS INITIALLY  
ROUTED 'VIA SUEZ' BY  
SEA AND LATER  
BY THE FASTER  
'VIA AMERICA' ROUTE.**

**28 JUNE 1919**  
Commercial mail,  
postmarked  
at Harbin, endorsed  
**"Via America"**  
sent to St, Gallen,  
Switzerland.

Route:  
Harbin-Mukden-Peking-  
Tientsin-Shanghai-  
(by sea) to America with  
forwarding to France-  
Switzerland.



**REGISTERED COMMERCIAL MAIL THROUGH  
THE JAPANESE POST OFFICE IN CHINA TO SWITZERLAND**

**18 FEBRUARY 1918**

Registered commercial mail, postmarked  
at the Japanese Post Office at Shanghai, China,  
with route endorsement  
**"Via Suez"**  
sent to Neuchatel, Switzerland.

Probable Route:  
Shanghai-Yokohama-Singapore-Aden-Suez-  
Marseilles-  
(by train) to Neuchatel

**25 Sen...**  
**10 Sen.. Single-weight (20 grams) letter-rate +**  
**15 Sen.. Registration fee**

RUSSIAN REVOLUTION & CIVIL WAR PERIOD  
1917 - 1920

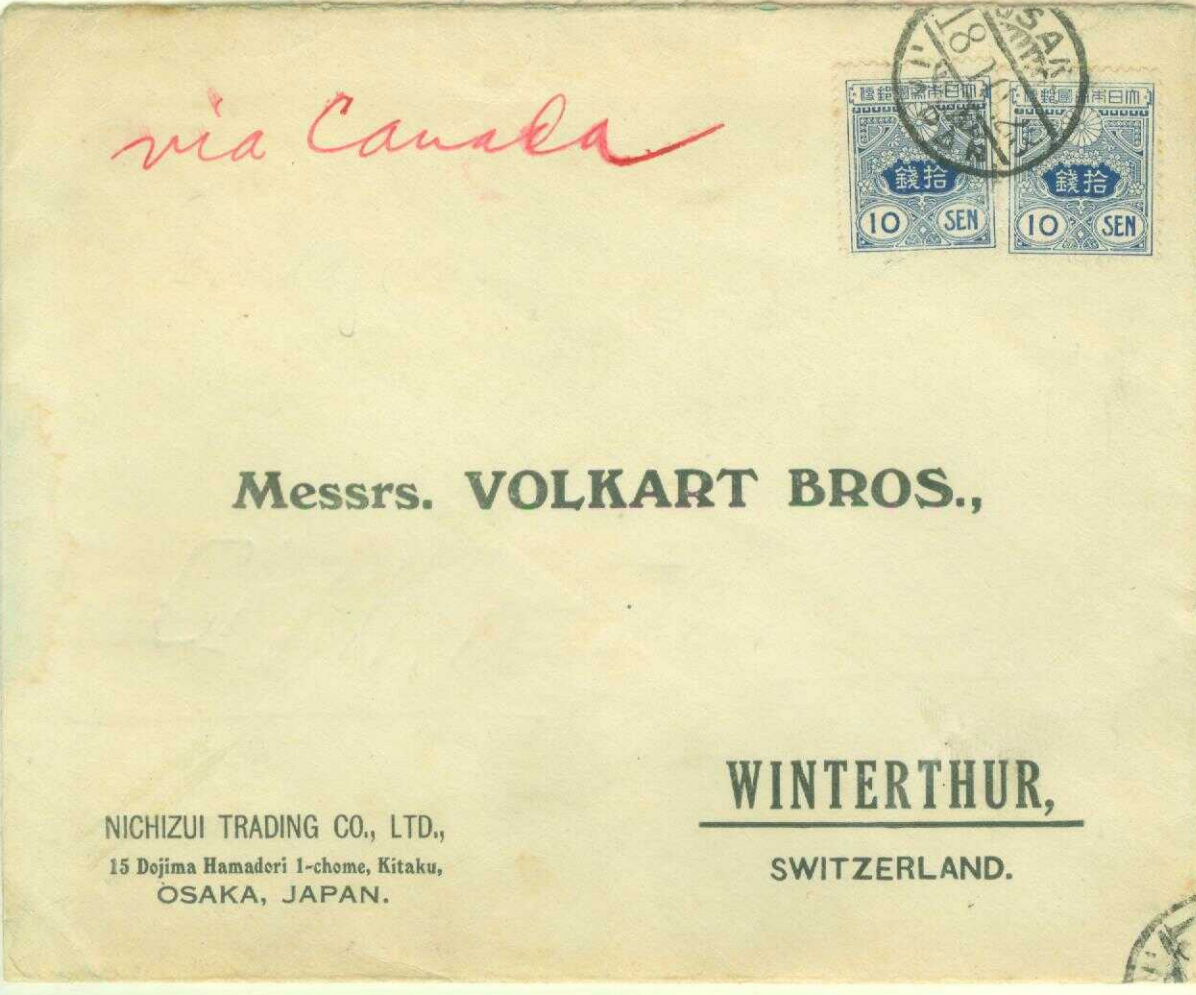
1918-19 Japan-Europe  
'Via Canada'  
'Via San Francisco'

Because of the turmoil in Russia and unusable heretofore faster 'Via Siberia' Route for mail to Europe, **JAPAN-ORIGIN MAIL NOW ALSO WAS ROUTED 'VIA NORTH AMERICA' THROUGH EITHER CANADA OR SAN FRANCISCO,** using whichever flag vessel met the post office schedule.

12 AUGUST  
1919

Commercial mail, postmarked at Osaka, Japan, with route endorsement "Via San Francisco" sent to Winterthur, Switzerland.

40 Sen...  
UPU International  
Quadruple-  
Weight  
(to 80 grams)  
Letter-Rate.



COMMERCIAL  
MAIL TO  
SWITZERLAND  
  
23 OCTOBER  
1918

Commercial mail, postmarked at Osaka, Japan, with route endorsement "Via Canada" sent to Winterthur, Switzerland.

20 Sen...  
UPU International  
Double-Weight  
(to 40 grams)  
Letter-Rate.

Probable Route:  
Osaka-San Francisco-New York-Hamburg-Munich-Basel-Zürich-Winterthur

WITH THE CESSATION OF HOSTILITIES IN EUROPE ON 11 NOVEMBER 1918 ALONG WITH THE SUBSEQUENT OCCUPATION OF THE RHINELAND BY ALLIED FORCES, COMMUNICATIONS IN 1919 BETWEEN GERMANY & "GERMAN" CHINA COULD ONCE AGAIN BEGIN, NOT 'VIA SIBERIA' (Russian Civil War) BUT INITIALLY THROUGH THE ALLIED OCCUPATION POST OFFICES, since German Post Offices in China no longer existed & China first ended its state of war with Germany on 15 September 1919.



EARLY POSTWAR CHINA-BOUND MISSIONARY MAIL FROM  
THE ALLIED-OCCUPIED GERMAN RHINELAND

13 AUGUST 1919

Postal-card, postmarked & censored at (American occupied) Coblenz, Germany, with route endorsement "Via America" sent to a Catholic Missionary in Shantung Province, Northern China. 62-day transit time.

Transit Postmarks:

"Tientsin (Chinese Post Office),  
12 October 1919"

"Tientsin (French Post Office),  
13 October 1919"

Probable Route:

Coblenz-Hamburg- (by sea) to New York- (by rail) to San Francisco- (by sea) to Shanghai- (by rail) to Northern China.

10 Pfennig...

UPU International Postcard-Rate

DESPITE A WORLD WAR I ARMISTICE TAKING EFFECT ON 11 NOVEMBER 1918, A PEACE TREATY HAD NOT BEEN SIGNED WITH GERMANY OR THE AXIS COUNTRIES RESULTING IN CENSORSHIP OF MAIL STILL IN EFFECT INCLUDING MAIL TO NEUTRAL SWEDEN WHEN SUCH INVOLVED ORGANIZATIONS AFFILIATED WITH 'GERMAN ASSISTANCE'.



CHINA-SWEDEN POSTAGE DUE MAIL 'VIA AMERICA' AND CENSORED

25 FEBRUARY 1919  
(United States Post Office)

Single-weight short-paid mail, postmarked at the United States Post Office at Shanghai, China, with route endorsement "Via America" to the "German Assistance Association" at Stockholm, Sweden.

Arrival Postmark:  
(Reverse)  
"Stockholm, 29 April 1919"  
(Krag Postmarking Machine)

Probable Route:  
Shanghai-San Francisco-New York-Stockholm

5 Cents..  
Shot-paid 1 Cent .. UPU Single-Weight (20 grams)  
International Letter-Rate resulting in postage due of  
2 Cents =




Reverse

RUSSIAN REVOLUTION & CIVIL WAR PERIOD  
1917 - 1920

1919 .. Red Cross P.O.W.  
'Via America' Mail to Austria

**SINCE THE RUSSIAN CIVIL WAR RAGED IN WESTERN RUSSIA**  
(between the Soviet and Imperial Forces resulting in most of the  
Siberian Railway Route unusable for mail transport to Europe),  
**GERMAN & AUSTRIAN PRISONER-OF WAR MAIL CONTINUED TO BE**  
**ROUTED "VIA AMERICA" BY THE RED CROSS AFTER CESSATION OF**  
**HOSTILITIES DURING WORLD WAR I.**

Absender: *H. Franz Mayer*  
Отправитель: *H. Franz Mayer*



Correspondance des prisonniers  
de guerre  
АВСТРО - ВЕНГРИЯ

Antwort — Réponse — Для отвѣта  
*War prisoners mail* CARTE POSTALE

Adresse: *Franz*  
*Ludovika Platz*  
*Wien, VII.*  
*Singlimgasse 10.*

Адресь: *Via America*

Portofrei  
Безплатно

Verlag der österr. Ges. vom „Roten Kreuze“  
Изданіе Австр. Общ. Краснаго Креста.

Nachdruck verboten  
Перепечатка воспрещается

30 DECEMBER 1919

Free-frank Russian-censored  
Red Cross  
Correspondence Response Postal Card,  
written by Austrian Prisoner-of-War in Siberia,  
with route endorsement  
"Via America",  
sent to Vienna, Austria.

BECAUSE OF  
CLOSURE OF  
RUSSIAN POST  
OFFICES IN  
MANCHURIA  
BETWEEN  
1920-1921  
AND PARTIAL  
NONAVAILABILITY  
OF RAIL ROUTES  
CONNECTING TO  
VLADIVOSTOK,  
MAIL FROM  
SHANGHAI TO  
VLADIVOSTOK WAS  
MOVED BY SEA TO  
THE LATTER DURING  
THOSE YEARS.



REGISTERED  
COMMERCIAL MAIL  
SHANGHAI TO  
VLADIVOSTOK

9 APRIL 1920  
(Russian Post Office)

Registered commercial  
mail from the Shanghai-  
branch of the  
"Great Northern  
Telegraph Company",  
postmarked  
by the Russian Post Office  
at Shanghai, China,  
sent to their  
Vladivostok-Office.  
35-day transit time.

Arrival Postmark:  
(Reverse)  
"Vladivostok, 14 May 1920"

26 Cents...  
10+6 Cents.. Double-weight  
(20-40 grams) letter-rate +  
10 Cents.. Registration fee



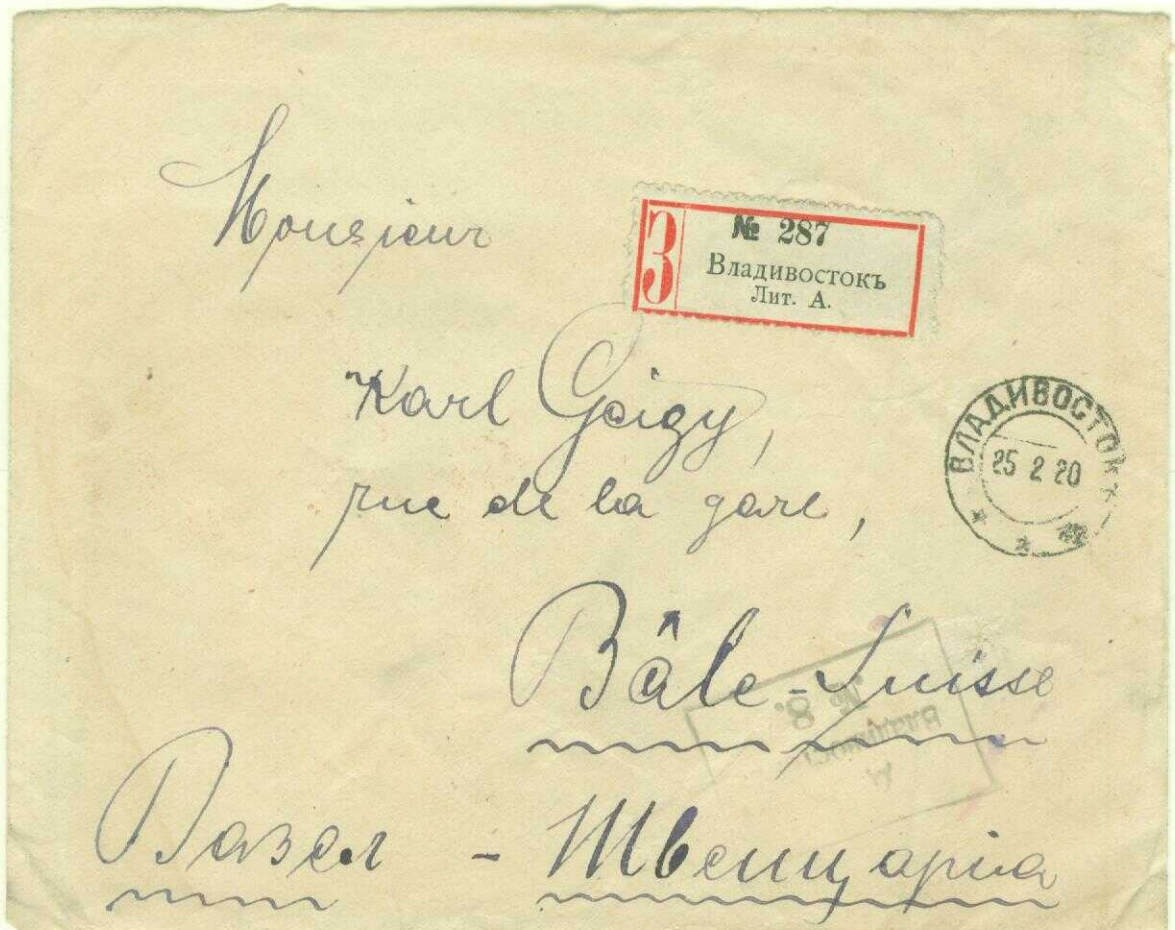
RUSSIAN REVOLUTION & CIVIL WAR PERIOD  
1917 - 1920

1920 .. Vladivostok-Switzerland

Commercial Mail  
Mail 'by Sea Route'

As a result of the Russian Civil War (1918-1920), the Second Russian-Polish War (1920/Peace Treaty of Riga, March 1921) as well as unsettled political conditions in Russia & Manchuria,

**EFFECTIVE EUROPE-BOUND MAIL USE OF THE TRANS-SIBERIAN NETWORK  
COULD NOT TAKE PLACE DURING 1918-1922, BUT ROUTED BY SEA  
OR 'VIA AMERICA' TO EUROPE.**



VLADIVOSTOK-ORIGIN RUSSIAN-CENSORED REGISTERED MAIL TO SWITZERLAND  
ROUTED BY SEA BECAUSE OF NONAVAILABILITY OF THE TRANS-SIBERIAN ROUTE

25 FEBRUARY 1920

Registered cover, Russian-censored, postmarked at Vladivostok, sent to "Karl Geigy" (Renowned Pharmacist) at Basel, Switzerland. 49-day transit time.

Arrival Postmark:  
(Reverse)  
"Basel, 15 April 1920"

Route:  
Vladivostok-London  
(by sea)-Antwerp-Basel

4 Rubles...  
2 Rubles... single-weight (20 grams)  
international letter-rate +  
2 Rubles.. Registration fee

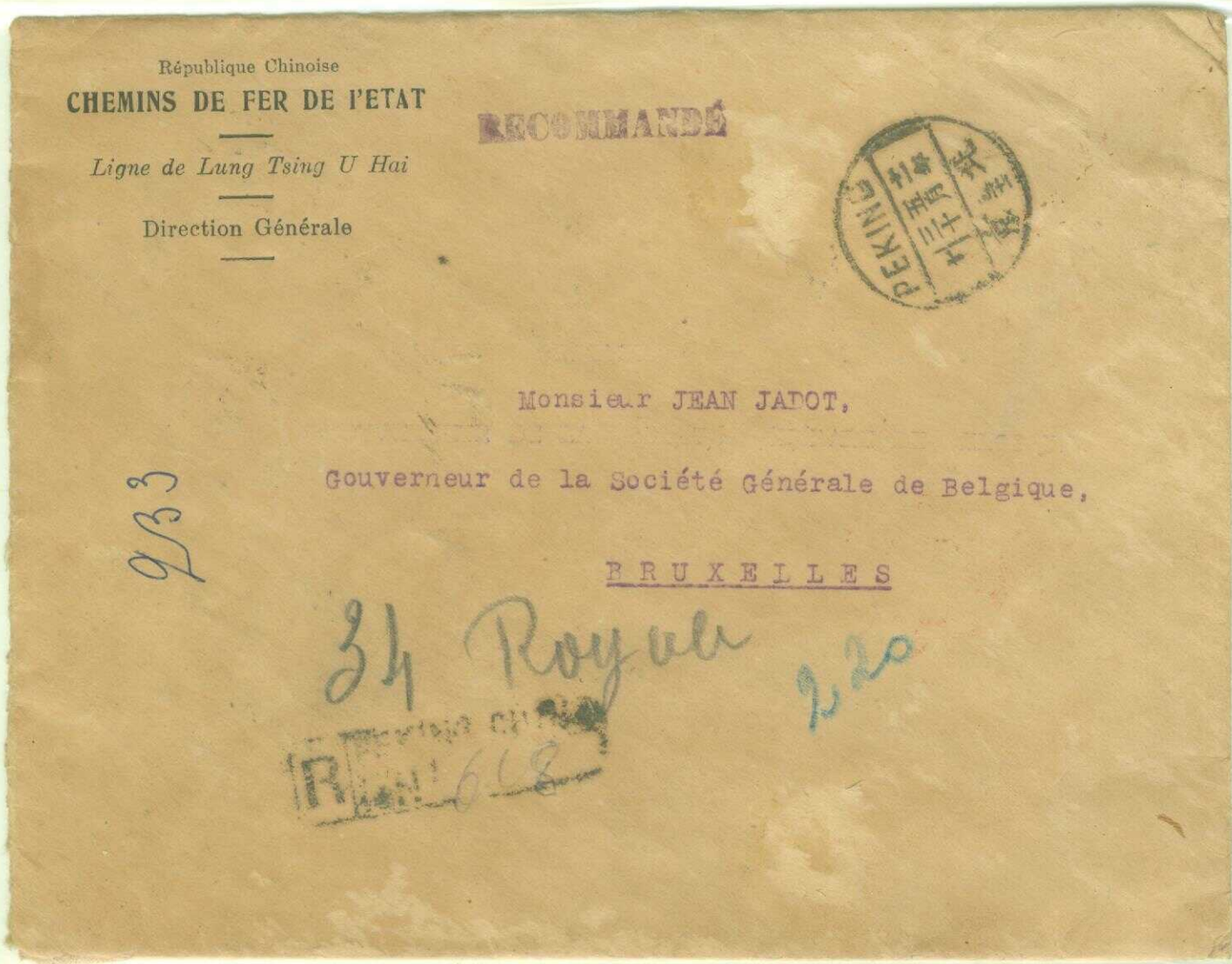


Reverse

VII. RESUMPTION & EXPANSION OF MAIL SERVICES  
1921 - 1922

China - Belgium  
Sea Route Diversion Mail  
1922

Until a new Russian national government was established after the civil war,  
**NORMAL RAIL SERVICES ON MOST OF THE TRANS-SIBERIAN NETWORK WOULD NOT  
BE FULLY RESUMED DURING 1921-1922,**  
requiring Chinese/Peking-origin mail to Western Europe to be routed by sea, either  
(via Peking-Tientsin-Pukow Line) to Shanghai or  
(via Chinese Eastern Railway Line) to Vladivostok

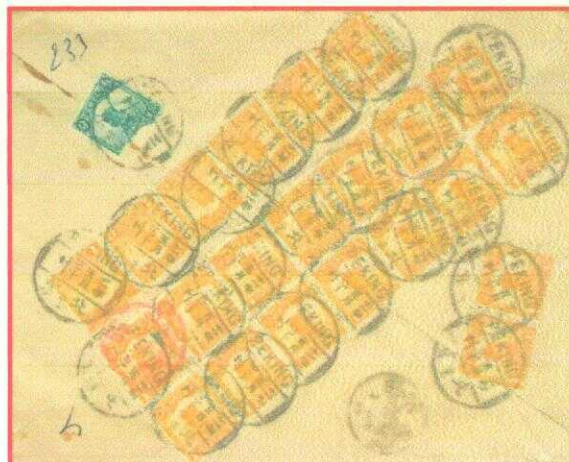


30 JUNE 1922  
Registered commercial mail of the  
Chinese Imperial Railways,  
postmarked Peking, sent to Brussels, Belgium.

Transit Postmarks:  
(Reverse)  
"Mukden, 3 July 1922"  
"London, -- August 1922"

Routing:  
Peking-Mukden-Vladivostok-(by sea) to London-  
Antwerp-Brussels

25 Cents..  
15 Cents International Letter Rate (7.5 ounces) +  
10 Cents Registration fee



Reverse

RESUMPTION & EXPANSION OF MAIL SERVICES  
1923-1931

1923 .. China-Europe  
Route Resumption

On 30 December 1922, the 'Soviet Union of Socialist Republics' was established, a federation of Russia, Ukraine, Belorussia and the Transcaucasian Republic.

BY 1923, OPERATION OF THE TRANS-SIBERIAN RAILWAY NETWORK RESTARTED IN FULL ON BOTH THE NORTHERN & SOUTHERN ROUTES.



SHORT-PAID/POSTAGE-DUE MAIL FROM CHINA TO SWITZERLAND  
(Chinese Post Office)

14 AUGUST 1923

Short-paid cover, postmarked at Peking, China, with route endorsement "Via Siberia" sent to Geneva, Switzerland. 28-day transit time.

Transit & Arrival Postmarks:  
(Reverse)

"Peking-Mukden (Railway Postmark)  
15 August 1923"

"Harbin, 16 August 1923"

"Geneva, 10 September 1923"

Route:

Peking-Mukden-Harbin-Irkutsk-Moscow-Berlin-  
Munich-Basel-Geneva

15 Cents...

UPU International Double-Weight  
(to 40 grams) Letter-Rate

short-paid 5 Chinese-Cents resulting in  
40 Swiss Centimes postage due + penalty.

(Rate Validity: 1 Jan. 1923 - 30 Sept. 1925)

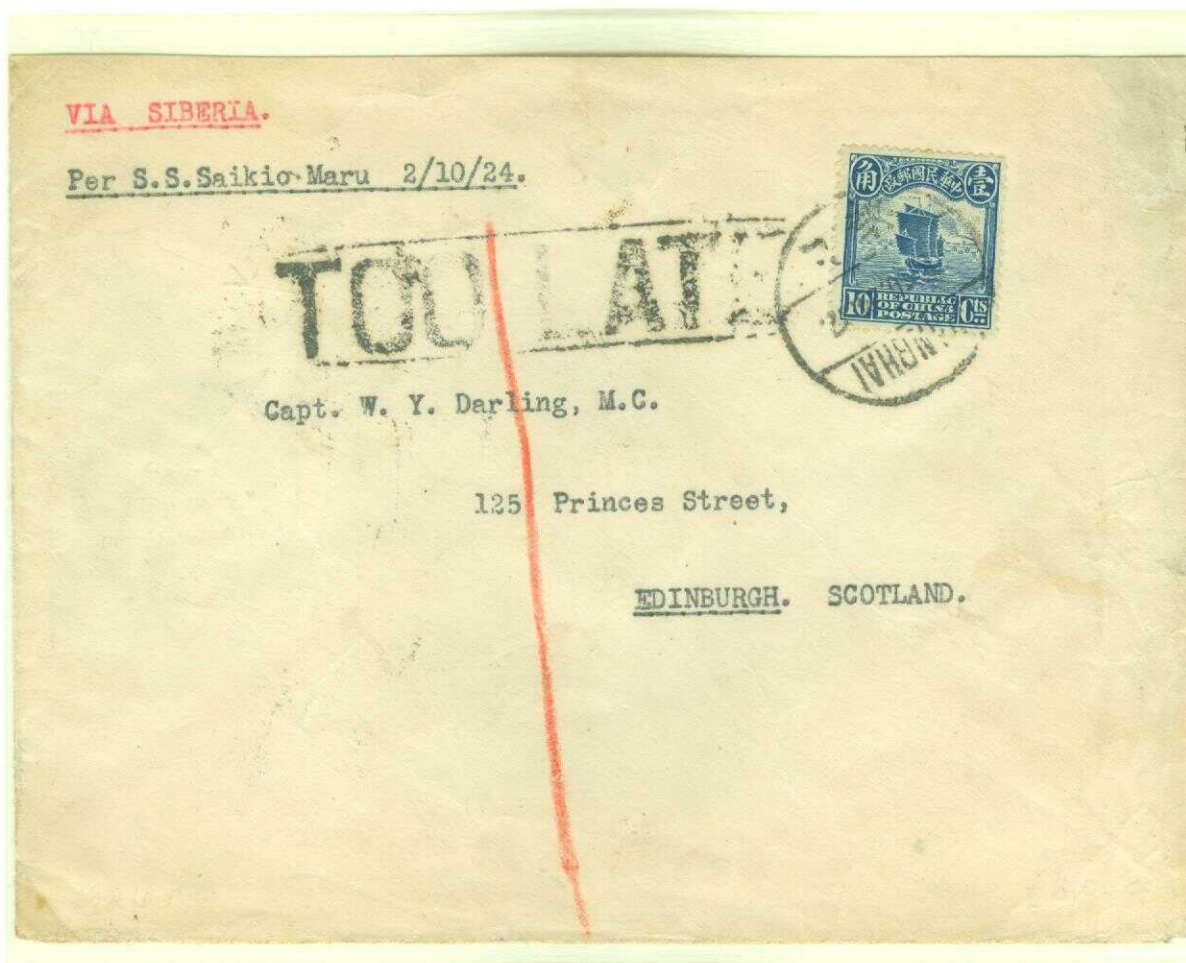


Reverse

RESUMPTION & EXPANSION OF MAIL SERVICES  
1923 - 1931

1924 .. Re-routed  
'By Sea'  
Endorsed Mail

'BY SEA' ENDORSED MAIL,  
OR MAIL WITH INDICATION OF VESSEL NAME AND SAILING DATE,  
WOULD BE OBSERVED BY THE POST OFFICE  
UNLESS IT WAS RECEIVED 'TOO LATE' FOR SUCH ROUTING.



ROUTE-ENDORSED 'BY SEA' MAIL WITH 'TOO LATE' ARRIVAL AT POST OFFICE  
WITH SUBSEQUENT RE-ROUTING 'VIA SIBERIA'

2 OCTOBER 1924

Cover, route endorsed  
"Per S.S. Saikio Maru 2/10/24",  
postmarked at Shanghai, China,  
addressed to "Captain W.Y. Darling, M.C." at  
Edinburgh, Scotland,  
post-mailing cachet marking  
'Too Late'  
and new route endorsement  
'Via Siberia'.

Probable Route:  
Shanghai-Pukow-Peking-Mukden-Harbin-Irkutsk-  
Moscow-Berlin-Hamburg-London-Edinburgh

10 Cents...  
UPU International Single-Weight (20 grams) Letter-Rate.

RESUMPTION & EXPANSION OF MAIL SERVICES  
1923-1931

1924.. China-Germany  
Commercial Mail

A TREATY BETWEEN RUSSIAN AND GERMANY WAS SIGNED ON 6 MAY 1921 ENABLING  
A NORMALIZATION OF RELATIONS TO TAKE PLACE, INCLUDING EXCHANGE OF MAIL.

SINGLE-WEIGHT  
MAIL TO  
GERMANY

6 MAY 1924

Commercial  
cover,  
postmarked at  
Shanghai, China,  
with route  
endorsement  
*"Via Siberia"*  
sent to Munich,  
Germany.

Route:  
Shanghai-  
Pukow-Peking-  
Mukden-Harbin-  
Irkutsk-Moscow-  
Berlin-Munich

(Reverse)  
10 Cents... UPU  
International  
Single-Weight  
(to 20 grams)  
Letter-Rate.

孔慈洋行 H. KUNZE & Co. via Siberia.  
9, CANTON ROAD,  
SHANGHAI.

Herren

Kranseder & Co

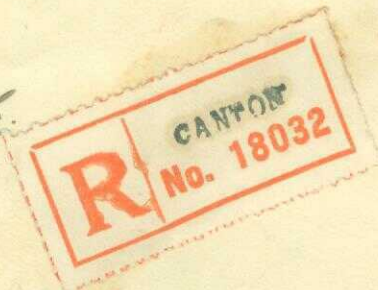
Trockenplattenfabrik

Lindwurmstr.

Muenchen.

Germany.

*Registered.*



*Herrn*

*Harms*

*To: E. Calmann.*

*3361 Cuxhaven. 31be*

*Germany*

*via*

*Siberia.*

*Nordersteinstrasse*

30 AUGUST 1924

Registered cover,  
postmarked at  
Canton, China,  
with route  
endorsement  
*"Germany Via  
Siberia"*  
to Cuxhaven,  
Germany.

Route:  
Canton-Pukow-  
Peking-Mukden-  
Harbin-Irkutsk-  
Moscow-Berlin-  
Hamburg-  
Cuxhaven

20 Cents...  
10 Cents.. UPU  
Single-Weight  
(to 20 grams)  
Letter-Rate +  
10 Cents  
Registration fee.

RESUMPTION & EXPANSION OF MAIL SERVICES  
1923-1931

1925.. North Manchuria  
Mail to Europe

Northern Manchuria was ceded to Russia in 1858-1860. Through heavy immigration, Southern Manchuria became more Chinese. Russian support for the Chinese against Japanese aggression in 1895 enabled Russia to receive permission from China to build the Chinese Eastern Railway. The Chinese 'Boxer Revolt' in 1900 resulted in Russian occupation of Manchuria to secure railway construction.

THE 'CITY OF HARBIN' IS LOCATED AT THE  
INTERSECTION POINT OF THE CHINESE & SOUTHERN MANCHURIAN RAILWAYS,  
BOTH FINANCED AND BUILT BY RUSSIA AND PART OF THE  
SOUTHERN TRANS-SIBERIAN RAIL NETWORK.



8 AUGUST 1925  
(Chinese Post Office)

Registered commercial cover,  
postmarked at Harbin, Manchuria, China, with  
route endorsement  
"Via Russia"  
sent to Darmstadt, Germany.  
26-day transit time.

Arrival Postmark;  
(Reverse)  
"Darmstadt, 3 September 1925"

Route:  
Harbin-Irkutsk-Moscow-Berlin-  
Frankfurt-Darmstadt



Reverse

20 Cents...  
10 Cents.. UPU International Single-Weight  
(to 20 grams) Letter-Rate  
+ 10 Cents Registration fee.

**RESUMPTION & EXPANSION OF MAIL SERVICES  
1923-1931**

**1925-1927..  
Mail To/From Japan**

**MAIL FROM/TO JAPAN WOULD BE ROUTED OVER THE NORTHERN  
BRANCH OF THE TRANS-SIBERIAN RAILWAY NETWORK,  
ENDING/COMMENCING AT VLADIVOSTOK AND  
BY SEA TO/FROM JAPAN.**

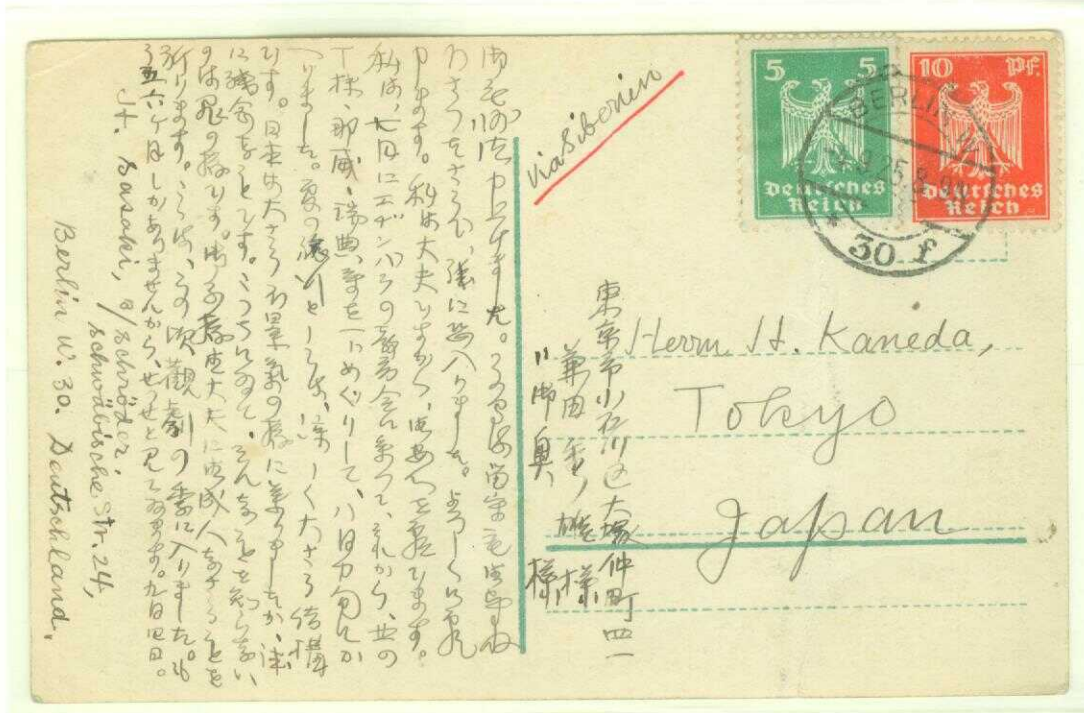
**EASTBOUND-MAIL..  
GERMANY-JAPAN**

**4 SEPTEMBER 1925**

Viewcard, postmarked  
at Berlin, Germany,  
with route endorsement  
**"Via Siberia"**  
to Tokyo, Japan.

**Route:**  
Berlin-Moscow-Irkutsk-  
Manchouli-Harbin-  
Vladivostok-  
(by sea) to Tsuruga-  
Tokyo

**15 Pfennig...  
UPU International  
Postcard-Rate.**



**WESTBOUND-MAIL.. JAPAN-ALBANIA**

**20 DECEMBER 1927**

Registered cover,  
postmarked at Nagoya  
& Kobe, Japan, routed  
**"via Siberia"**  
sent to Durres-Durazzo,  
Albania.  
21-day transit time.

Arrival Postmark:  
(Reverse)  
"Dures,  
11 January 1928"

**Route:**  
Nagoya-Kobe.. by sea  
to Vladivostok-Harbin-  
Manchouli-Irkutsk-  
Moscow-Berlin-Prag-  
Vienna-Zagreb-Tirana-  
Durres

**26 Sen..  
10 Sen.. International  
Single-Weight  
(20 grams) Letter-Rate +  
16 Sen.. Registration fee**



THE 'CITY OF MUKDEN', LOCATED AT THE INTERSECTION OF THE  
NORTHERN CHINESE & SOUTHERN MANCHURIAN RAILWAYS, WAS TRANSFER POINT TO  
THE TRANS-SIBERIAN RAILWAY NETWORK FOR MOST CHINESE & PACIFIC-ORIGIN MAIL  
TO WESTERN RUSSIA, EUROPE & BEYOND.

The „RIN-TAI“ Stores Co.  
MOUKDEN, (SOUTH MANCHURIA.)

*Registered*

VIA SIBERIA

Messrs.

Josef Winter

Fabrikstrasse 2

Postschliessfach Nr.5

RADEBERG IN SACHSEN

GERMANY



25 OCTOBER 1927  
(Chinese Post Office)

Registered commercial cover,  
postmarked at Mukden, Manchuria, China,  
with route endorsement  
*"Via Siberia"*  
sent to Radeberg, Saxony, Germany.  
11-day transit time!

Transit & Arrival Postmarks;  
(Reverse)  
"Dresden, 5 November 1927"  
"Radeberg, 5 November 1927"

Route:  
Mukden-Harbin-Irkutsk-Moscow-Berlin-  
Dresden-Radeberg

20 Cents...  
10 Cents.. UPU International Single-Weight  
(to 20 grams) Letter-Rate  
+ 10 Cents.. Registration fee.



Reverse



RESUMPTION & EXPANSION OF MAIL SERVICES  
1923-1931

1927.. North China  
Hostilities

In July 1926, the Chinese Nationalist Party, "The Kuomintang", under General Chiang Kai-Shek, commenced an offensive in North China attempting to unify the country, moving northward in May 1927 toward Chili Province and the cities of Peking & Tientsin, with Japanese intervention in the adjacent Shantung Province, initially blocking General Chiang's advance.

DESPITE HOSTILITIES & PRECARIOUS POLITICAL SITUATION IN THE NORTHERN PROVINCES,  
MAIL APPARENTLY WAS NOT DELAYED NOR RAIL INTERRUPTION OVER THE  
TIENSIN-PEKING-MUKDEN RAIL LINES,  
CONNECTING WITH THE TRANS-SIBERIAN RAIL NETWORK.



15 AUGUST 1927  
(Chinese Post Office)

Registered commercial cover,  
postmarked at Tientsin, China, with route endorsement  
"Via Siberia"  
sent to Prague, Czechoslovakia. 14-day transit time.

Arrival Manuscript Marking;  
"19 August 1927"

Route:  
Tienstin-Peking-Mukden-Harbin-Irkutsk-Moscow-Berlin-Dresden-Prague

26 Cents...  
10+6 Cents.. UPU International Double-Weight (to 40 grams) Letter-Rate  
+ 10 Cents Registration fee.

RESUMPTION & EXPANSION OF MAIL SERVICES  
1923-1931

1928.. China-Germany  
Printed-Matter Mail

6 OCTOBER 1928

Printed-matter  
cover,  
postmarked at  
Shanghai,  
China, with route  
endorsement  
*"Via Siberia"*,  
sent to  
Büdingen,  
Hesse, Germany



Route:  
Shanghai-  
Pukow-Peking-  
Mukden-Harbin-  
Irkutsk-Moscow-  
Berlin-Büdingen

2 Cents...  
International  
printed-matter  
weighing up to  
50 grams

(Validity:  
1 January 1923 -  
30 June 1930)

RESUMPTION & EXPANSION OF MAIL SERVICES  
1923-1931

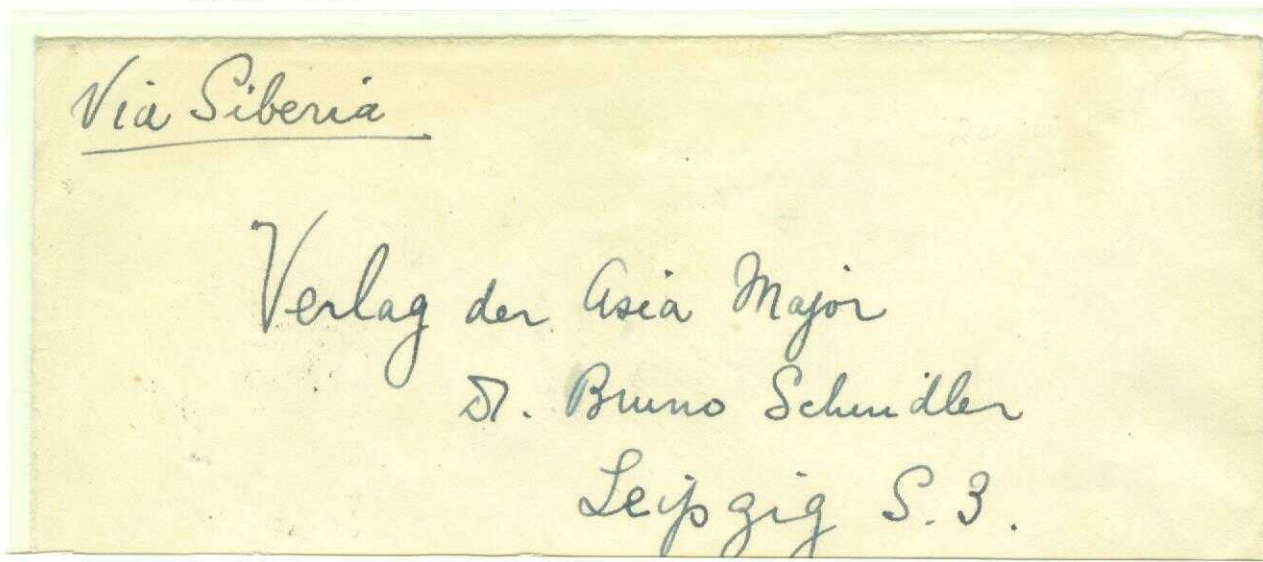
1929-30.. China-Germany  
Commercial Mail

MAIL FROM  
PEKING

24 APRIL 1929  
(Chinese Post  
Office)

Cover,  
postmarked  
at Peking,  
China,  
with route  
endorsement  
"Via Siberia"  
sent to  
Leipzig.

Route:  
Peking-  
Mukden-  
Harbin-  
Irkutsk-  
Moscow-  
Berlin-Leipzig



10 Cents... International  
single-weight  
(to 20 grams)  
letter-rate.  
(Validity:  
1 January 1923 -30 June 1930)



Reverse

REGISTERED MAIL  
FROM TIENSIN

6 NOVEMBER 1930

Cover, postmarked  
at Tientsin, China,  
with route  
endorsement  
"Registered  
Via Siberia"  
sent to Biesenthal,  
Germany.  
14-day transit time.

Arrival Postmark:  
(Reverse)  
"Biesenthal,  
20 November 1930"

Route:  
Tientsin-Peking-  
Mukden-Harbin-  
Irkutsk-Moscow-  
Berlin-Biesenthal

30 Cents...  
15 Cents.. Single-  
weight international  
letter-rate +  
15 Cents  
Registration fee.  
(Validity:  
1 July 1930 -  
31 January 1931)

A. J. SEREBRENNIKOFF & CO.

∴ Russian Printing Shop ∴



А. И. СЕРЕБРЕННИКОВ и КО.

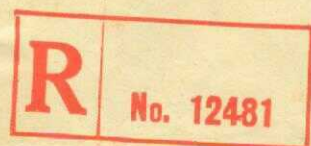
∴ Русская Типография ∴

館字印富連賽  
24 Dickinson Road, Tientsin, Tel. 31222

Registered

Via Siberia

Messrs. Walter Birke  
Buntpapier-Fabrik  
Biesenthal b. B E R L I N



RESUMPTION & EXPANSION OF MAIL SERVICES  
1923-1931

1928.. Japan-England  
Advertising Mail



28 JULY 1928

Advertising/  
printed-matter/  
commercial mail,  
postmarked at  
Osaka, Japan, with  
route endorsement  
"Via Siberia"  
sent to London,  
England.

Probable Route:  
Osaka-Tsuruga  
Vladivostok  
(Russia)-Harbin-  
Manchouli-Irkutsk-  
Moscow-Berlin-  
Hamburg-England

4 Sen...  
International  
printed-matter rate  
for mail weighing up  
to 50 grams.



Reverse

RESUMPTION & EXPANSION OF MAIL SERVICES  
1923-1931

1929.. Japan-Europe  
Mail

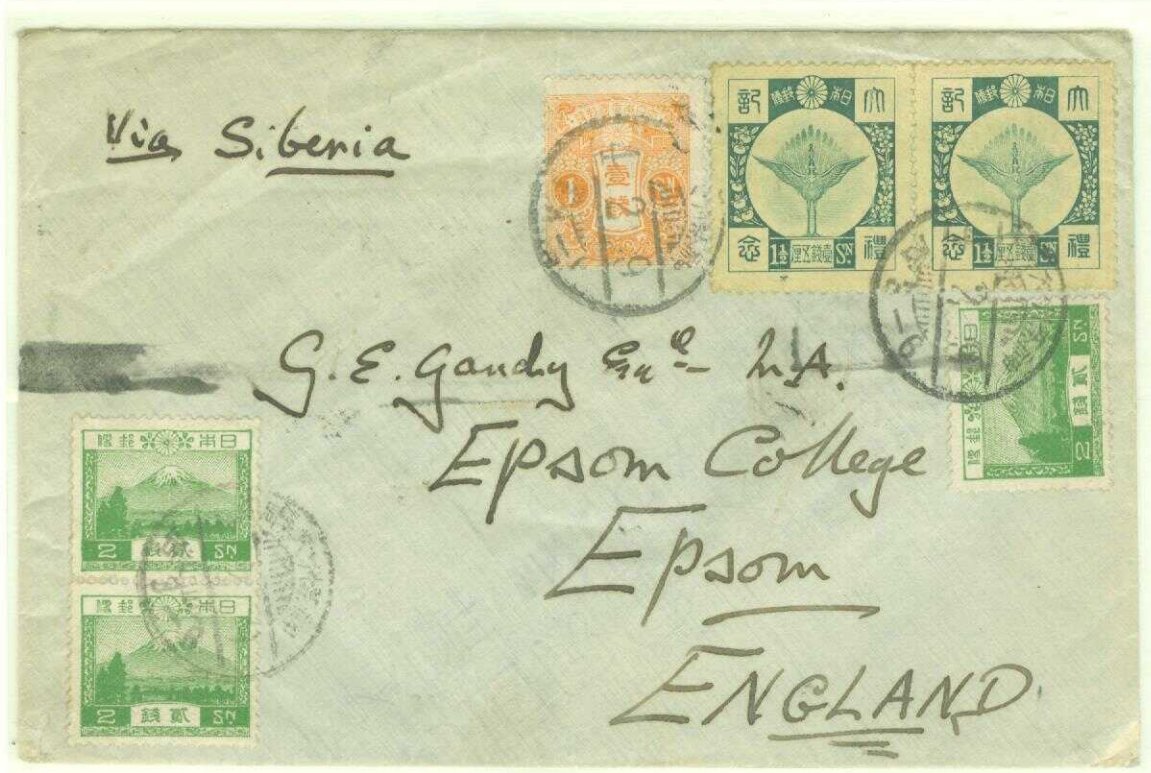
SINGLE-WEIGHT  
MAIL TO  
ENGLAND

9 FEBRUARY 1929  
(Japan Post Office)

Cover, postmarked  
in Japan, with route  
endorsement  
"Via Siberia"  
sent to Epsom  
College, Epsom,  
England.

Route:  
Japan- (by sea) to  
Vladivostok-Harbin-  
Manchouli-Irkutsk-  
Moscow-Berlin-  
Hamburg-England

10 Sen... UPU  
International  
Single-Weight  
(to 20 grams)  
Letter-Rate.



REGISTERED  
COMMERCIAL MAIL  
TO ITALY

23 AUGUST 1929

Registered commercial  
cover, postmarked at  
Kyoto, Japan, with route  
endorsement  
"Via Siberia"  
sent to Naples, Italy.  
17-day transit time.

Transit & Arrival  
Postmarks:

(Reverse)  
"Venice,  
8 September 1929"  
"Naples-Rancom  
Railway,  
9 September 1929"

Probable Route:  
Kyoto-Tsuruga-  
Vladivostok-Harbin-  
Manchouli-Irkutsk-  
Moscow-Berlin-Munich-  
Naples

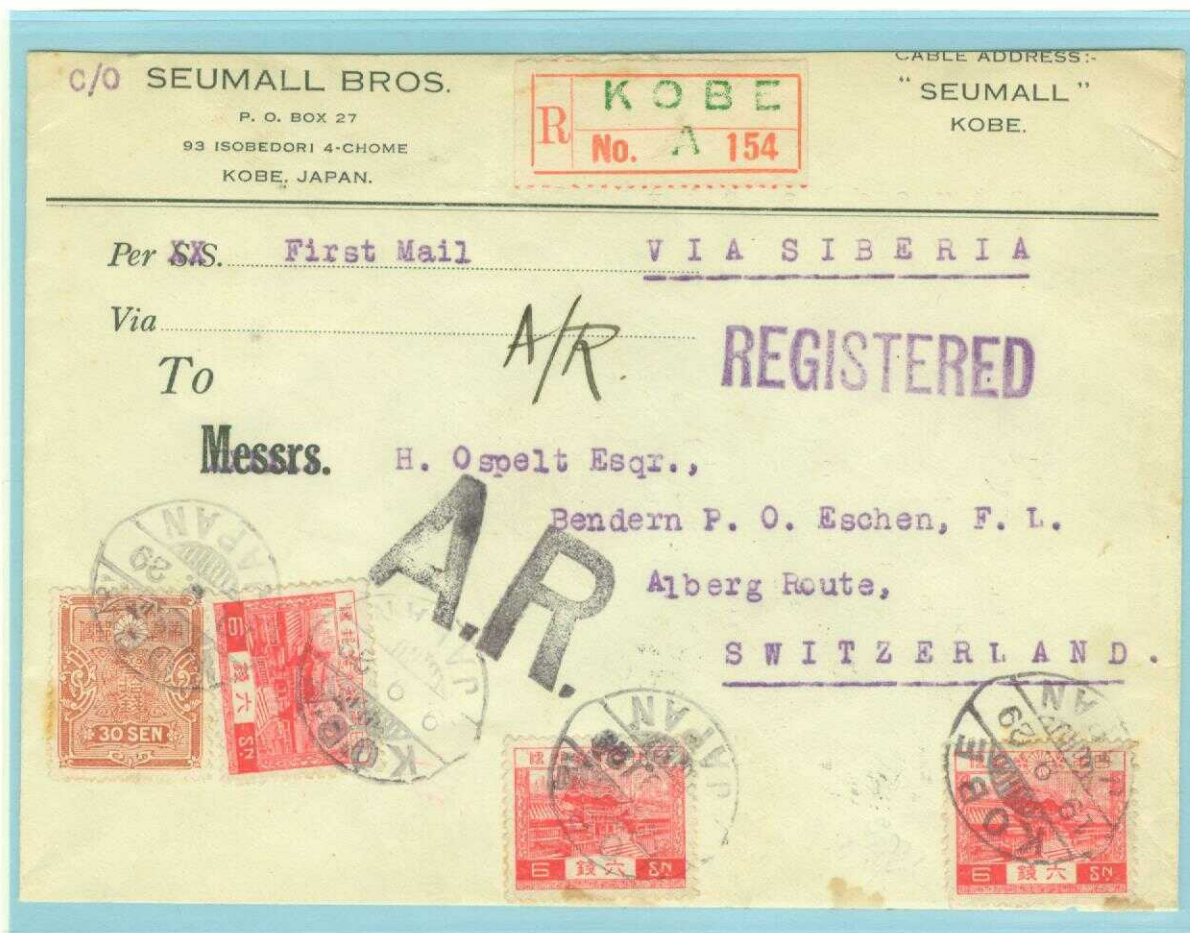
32 Sen...  
10+6 Sen..  
Double-weight  
(to 40 grams)  
letter-rate + 16 Sen  
Registration fee.



RESUMPTION & EXPANSION OF MAIL SERVICES  
1923 - 1931

1929 .. Japan-Liechtenstein  
Mail

The Post Office of the Principality of Liechtenstein, a small territory located between Switzerland & Austria, was administered by the Swiss Post Office since 1921.



DOUBLE-WEIGHT REGISTERED RETURN-RECEIPT COMMERCIAL MAIL  
FORM JAPAN TO LIECHTENSTEIN

19 SEPTEMBER 1929

Commercial cover, postmarked  
at Kobe, Japan, with route endorsement  
"Via Siberia"

sent to Bendorf, Principality of Liechtenstein, using  
the "Alberg (Mountain) Route, Switzerland". 18-day transit time.

Arrival Postmark:  
(Reverse)  
"Eschen, 7 October 1929"

Probable Route:  
Kobe.. by sea to Dalny- (by rail) to  
Harbin-Irkutsk-Moscow-Berlin-Basel-Zurich-Liechtenstein

48 Sen...  
10 Sen + 6 Sen.. Double-weight letter (to 40 grams)  
+ 16 Sen.. Registration fee  
+ 16 Sen.. Return-receipt fee

RESUMPTION & EXPANSION OF MAIL SERVICES  
1923 - 1931

1929 .. Zeppelin Mail  
"Via Siberia" to Japan

**THE 'GRAF ZEPPELIN' ROUND-THE-WORLD FLIGHT OF 1929**  
carried commercial mail to Tokyo with other-destination-mail  
being forwarded by airmail from Tokyo.

Zeppelin Route:  
Friedrichshafen-Berlin-Danzig-Königsberg-Irkutsk-Tokyo  
(15 - 19 August 1929)



GRAF ZEPPELIN FLIGHT FROM GERMANY TO JAPAN 'VIA SIBERIA'  
WITH AIRMAIL FORWARDING FROM TOKYO-SHANGHAI

15 AUGUST 1929

Cover, postmarked at Friedrichshafen, Germany, having route endorsement  
"With Air Ship Graf Zeppelin to Tokyo"  
& supplemental routing cachet marking  
"Friedrichshafen (Bodensee) - Tokyo"  
sent to Shanghai, China. 9-day transit time.

Arrival Postmark:  
(Reverse)  
"Shanghai, 23 August 1929"

RM 4.00...  
Zeppelin International Letter-Rate.

RESUMPTION & EXPANSION OF MAIL SERVICES  
1923-1931

1929.. China-England  
Commercial Mail  
'Via Japan and Siberia'

BECAUSE OF  
INSTABILITY IN  
NORTH CHINA AND  
POTENTIAL MAIL  
TRANSIT DELAYS,  
MAIL FROM  
SHANGHAI  
(Central Coastal  
China) WAS  
ROUTED BY SEA TO  
JAPAN AND RUSSIA  
WITH MOVEMENT  
OVER THE  
NORTHERN BRANCH  
OF THE TRANS-  
SIBERIAN RAIL  
NETWORK TO  
EUROPE.

REGISTERED  
Via JAPAN and SIBERIA  
19.8  
THE MANAGER  
LLOYDS BANK LTD  
SHANGHAI  
No. 9902  
PICCADILLY  
MANCHESTER  
ENGLAND

27 DECEMBER 1929  
(Chinese Post Office)

Registered commercial  
cover, postmarked at  
Shanghai, China,  
with route endorsement  
"Via Japan and Siberia"  
sent to Manchester,  
England.

Route:  
Shanghai- (by sea) to Japan  
& Vladivostok (Russia)-  
Harbin-Manchouli-Irkutsk-  
Moscow-Berlin-Hamburg-  
England

31 Cents...  
10+6 Cents.. Double-weight  
(to 40 grams) international  
letter-rate +  
15 Cents.. Registration fee

(Validity: 1 October 1925 -  
30 June 1930)

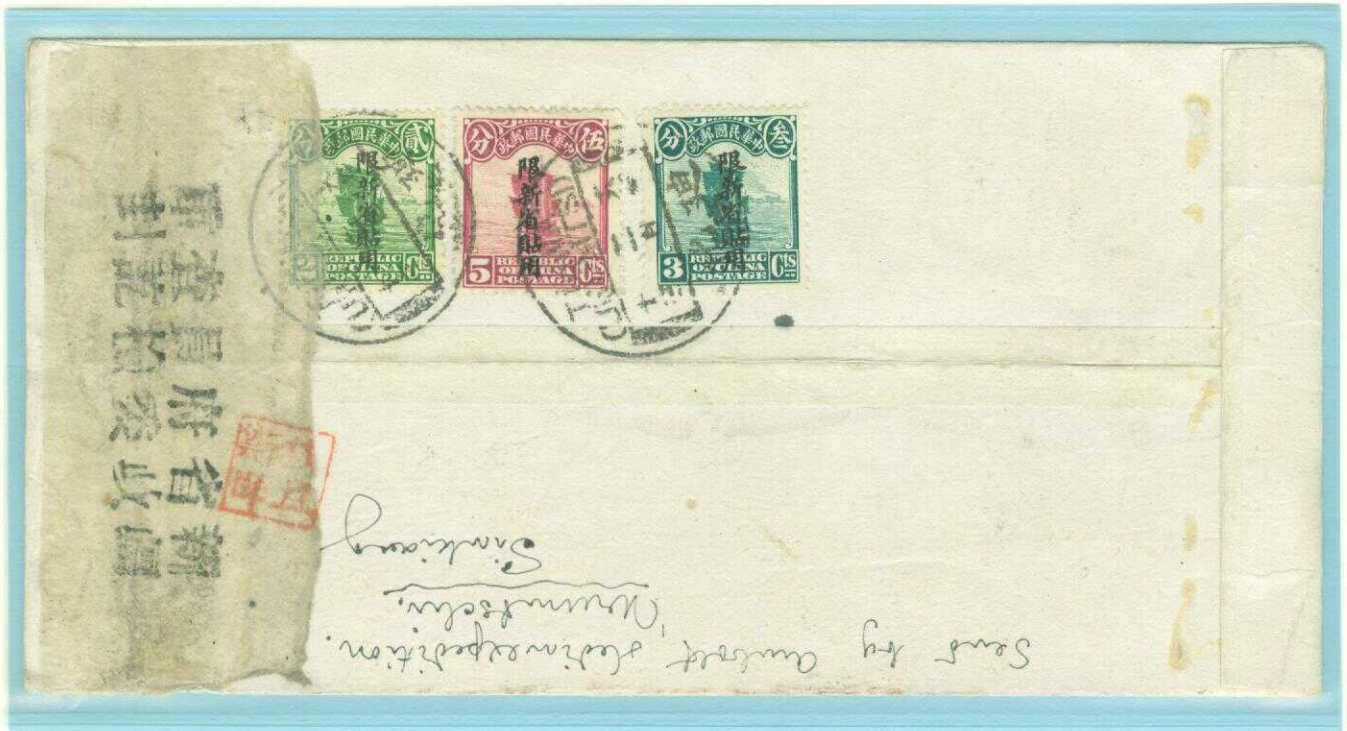


RESUMPTION & EXPANSION OF MAIL SERVICES  
1923-1931

1929.. Sinkiang-Sweden  
'Hedin Expedition' Mail

**SVEN HEDIN** organized & led international **SINO-SWEDISH EXPEDITIONS THROUGH** Mongolia, the Gobi Desert and **SINKIANG PROVINCE OF CHINA** between 1927-1935, with archeologists, astronomers, botanists, geographers, geologists, meteorologists and zoologists from Sweden, Germany and China, resulting in findings which are still today being published and used in research.

**THE EXPEDITION'S ASTRONOMER WAS 'NILS PETER AMBOLT'**.

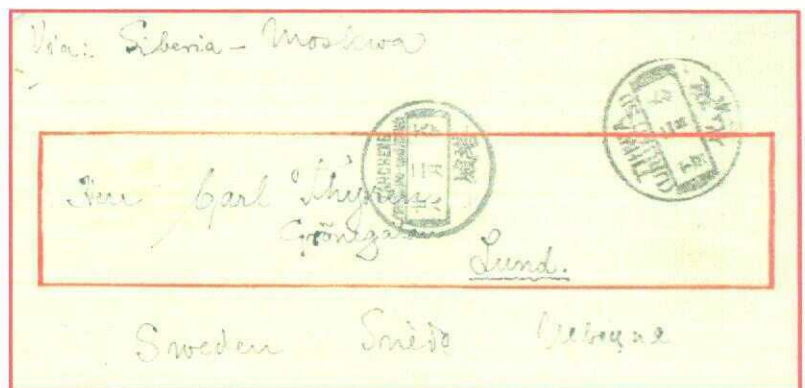


**SINKIANG INSPECTED & CENSORED  
MAIL TO SWEDEN**

13 FEBRUARY 1929

'Nils Peter Ambolt' cover,  
postmarked at  
Tihwa (Wulumuchi/Urumchi), Sinkiang,  
inspector-censored  
(label attachment/**red chop**) at T'ach'eng  
(Tahcheng/Dahcheng), Sinkiang  
(border town with Russia),  
with route endorsement  
**"Via Siberia - Moscow"**  
sent to Lund, Sweden.

Transit Postmark:  
(front)  
"Tahcheng,  
28 February 1929"



Front

Probable Route:  
(Caravan-route) ..  
Tihwa-Tahcheng-Sarebryansk (Russia)-  
(by rail) Omsk-Moscow-  
St. Petersburg-(ship) Stockholm-Lund

10 Cents...  
UPU International Single-Weight (1/2 ounce) Letter-Rate

RESUMPTION & EXPANSION OF MAIL SERVICES  
1923-1931

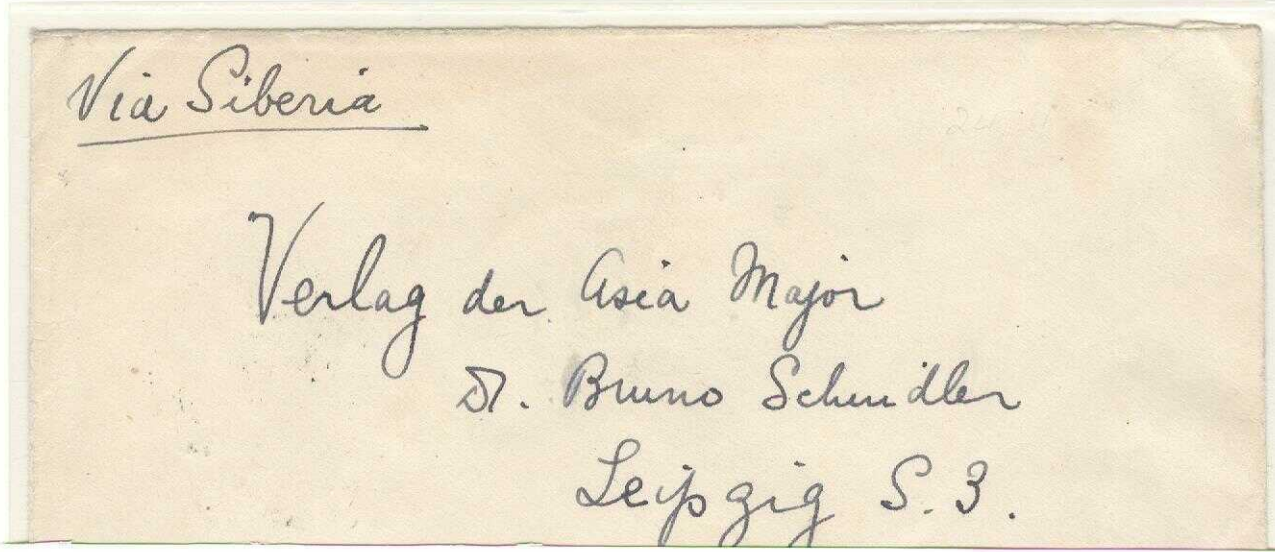
1929-30.. China-Germany  
Commercial Mail

MAIL FROM  
PEKING

24 APRIL 1929  
(Chinese Post Office)

Cover, postmarked at Peking, China, with route endorsement "Via Siberia" sent to Leipzig.

Route:  
Peking-  
Mukden-  
Harbin-  
Irkutsk-  
Moscow-  
Berlin-Leipzig



10 Cents... International  
single-weight  
(to 20 grams)  
letter-rate.  
(Validity:  
1 January 1923 -30 June 1930)



Reverse

REGISTERED MAIL  
FROM TIENSIN

6 NOVEMBER 1930

Cover, postmarked at Tientsin, China, with route endorsement "Registered Via Siberia" sent to Biesenthal, Germany. 14-day transit time.

Arrival Postmark:  
(Reverse)  
"Biesenthal,  
20 November 1930"

Route:  
Tientsin-Peking-  
Mukden-Harbin-  
Irkutsk-Moscow-  
Berlin-Biesenthal

30 Cents...  
15 Cents.. Single-  
weight international  
letter-rate +  
15 Cents  
Registration fee.  
(Validity:  
1 July 1930 -  
31 January 1931)



A. J. SEREBRENNIKOFF & CO.  
∴ Russian Printing Shop ∴

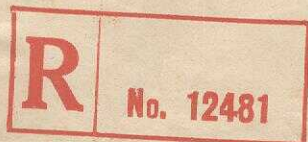


A. И. СЕРЕБРЕННИКОВ и КО.  
∴ Русская Типография ∴

賽連富印字館  
24 Dickinson Road, Tientsin, Tel. 31222

Registered  
Via Siberia

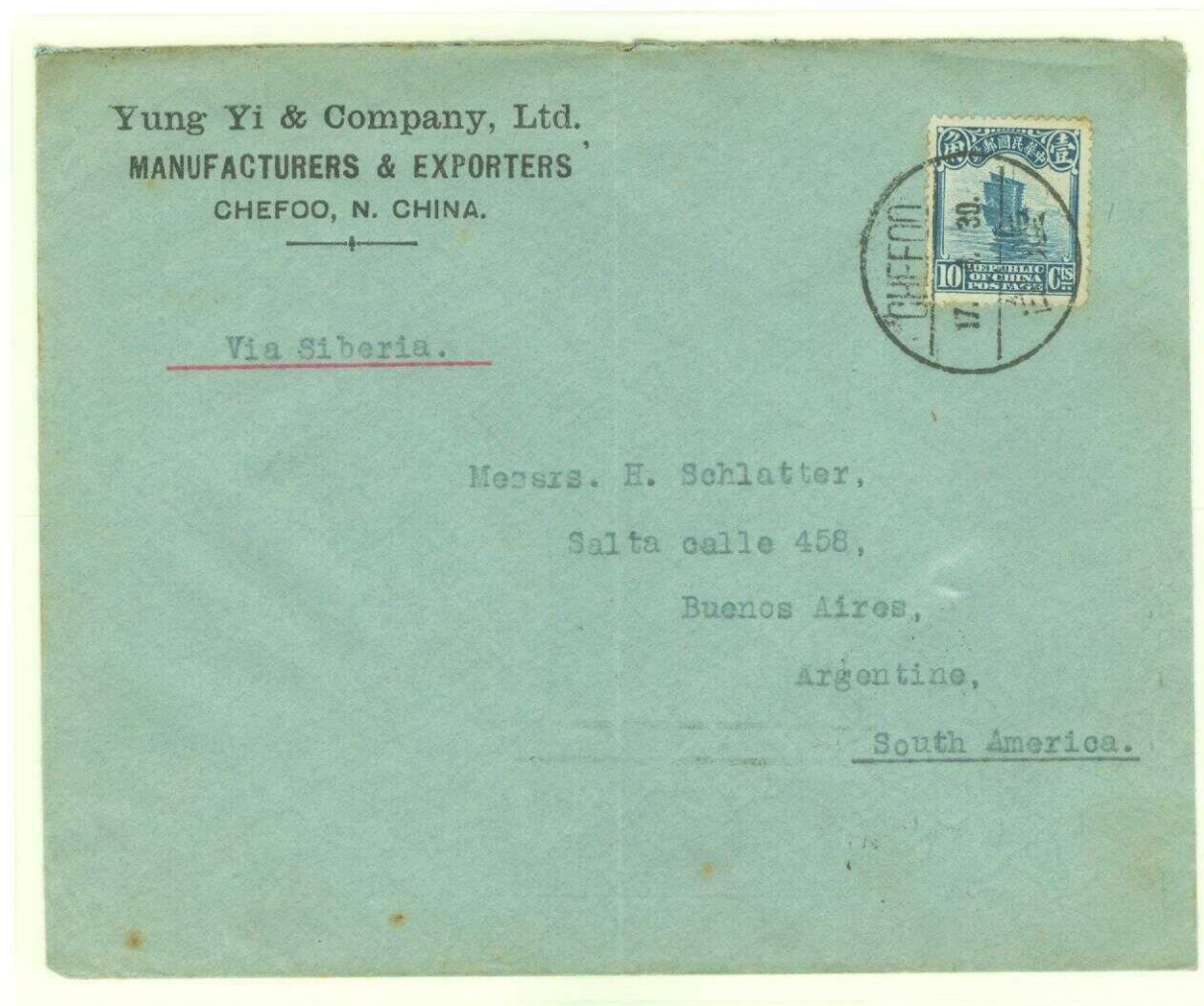
Messrs. Walter Birke  
Buntpapier-Fabrik  
Biesenthal b. BERLIN



RESUMPTION & EXPANSION OF MAIL SERVICES  
1923-1931

1930.. China-Argentina  
Mail

CHINA TO SOUTH AMERICA 'VIA SIBERIA' & EUROPE MAIL



23 APRIL 1930  
(Chinese Post Office)

Commercial cover,  
postmarked at Chefoo, China, with route endorsement  
"Via Siberia"  
sent to Buenos Aires, Argentina. 32-day transit time.

Arrival Postmark  
(Reverse)  
"Buenos Aires, 19 May 1930"

Probable Route:  
Chefoo- (by sea) to Dalny-Harbin-Irkutsk-Moscow-Berlin-Hamburg-  
(by sea) to Buenos Aires

10 Cents...  
UPU International Single-Weight (20 grams) Letter-Rate  
(Validity: 1 Jan 1923 - 30 June 1930)

RESUMPTION & EXPANSION OF MAIL SERVICES  
1923-1931

1930.. North Manchuria  
Mail to Southern Europe

IN AN EFFORT TO PREVENT THE PURCHASE & RESALE ELSEWHERE OF POSTAGE STAMPS  
SOLD IN MANCHURIA, WHERE THE CURRENCY WAS DEPRECIATED,  
IN 1927  
THE CHINA POST OFFICE OVERPRINTED THEIR REGULAR ISSUE OF 1923-1926  
FOR USE IN THE PROVINCES OF KIRIN & HELLUNGKIANG.

用貼黑吉限



23 AUGUST 1930  
(Chinese Post Office)

Registered commercial mail,  
postmarked at Harbin, Manchuria, China, with route endorsement  
"Via Russia"  
sent to Athens, Greece. 21-day transit time.

Arrival Postmark  
(Reverse)  
"Athens, 13 September 1930"

Probable Route:  
Harbin-Irkutsk-Moscow-Berlin-Munich-Vienna-Zagreb-Belgrade-Athens

25 Cents...  
15 Cents.. Single-weight (to 20 grams) letter-rate  
+ 10 Cents registration fee.  
(Validity: 1 July 1930 - 28 February 1931)

**RESUMPTION & EXPANSION OF MAIL SERVICES  
1923 - 1931**

1930 .. 'Via Siberia'  
**DERULUFT Airmail**

Airmail between Europe & the Soviet Union commenced soon after the conclusion of a peace treaty between Germany & the USSR in May 1921 along with establishment of **DERULUFT**, a joint Russian-German Airline, in November 1921. The first air service route was between Moscow and Königsberg, East Prussia, Germany, in May 1922.

**BY 1930, A MORE EXTENSIVE AIR ROUTE OF 'BERLIN-DANZIG-KÖNIGSBERG-RIGA-SMOLENSK-MOSCOW-IRKUTSK' (Siberia) TOOK EFFECT.**



**18 AUGUST 1930**

Registered commercial cover, postmarked at Shanghai, China, with Chinese/French/German/Russian cachets "Par Avion", "Luftpost" (= Airmail) sent to Cologne, Germany, 18-day transit time.

Transit & Arrival Postmarks  
(Reverse)

"Harbin, 23 August 1930"  
"Moscow, 3 & 5 September 1930"  
"Cologne, 5 September 1930"

Route:

Rail: Shanghai-Pukow-Peking-Mukden-Harbin-Irkutsk  
Air: Irkutsk-Moscow-Berlin-Cologne

\$ 3.63 ...

15+9+9 Cents.. triple-weight letter (60 grams) +  
15 Cents.. Registration fee +  
45 Cents.. Air Surcharge (China/Zone 3) +  
\$1.50.. Airmail Irkutsk-Moscow +  
\$1.20.. Airmail Moscow-Germany

**CHINA-GERMANY COMMERCIAL MAIL BY RAILWAY  
FROM SHANGHAI TO IRKUTSK  
AND AIRMAIL FROM IRKUTSK TO GERMANY**



Reverse

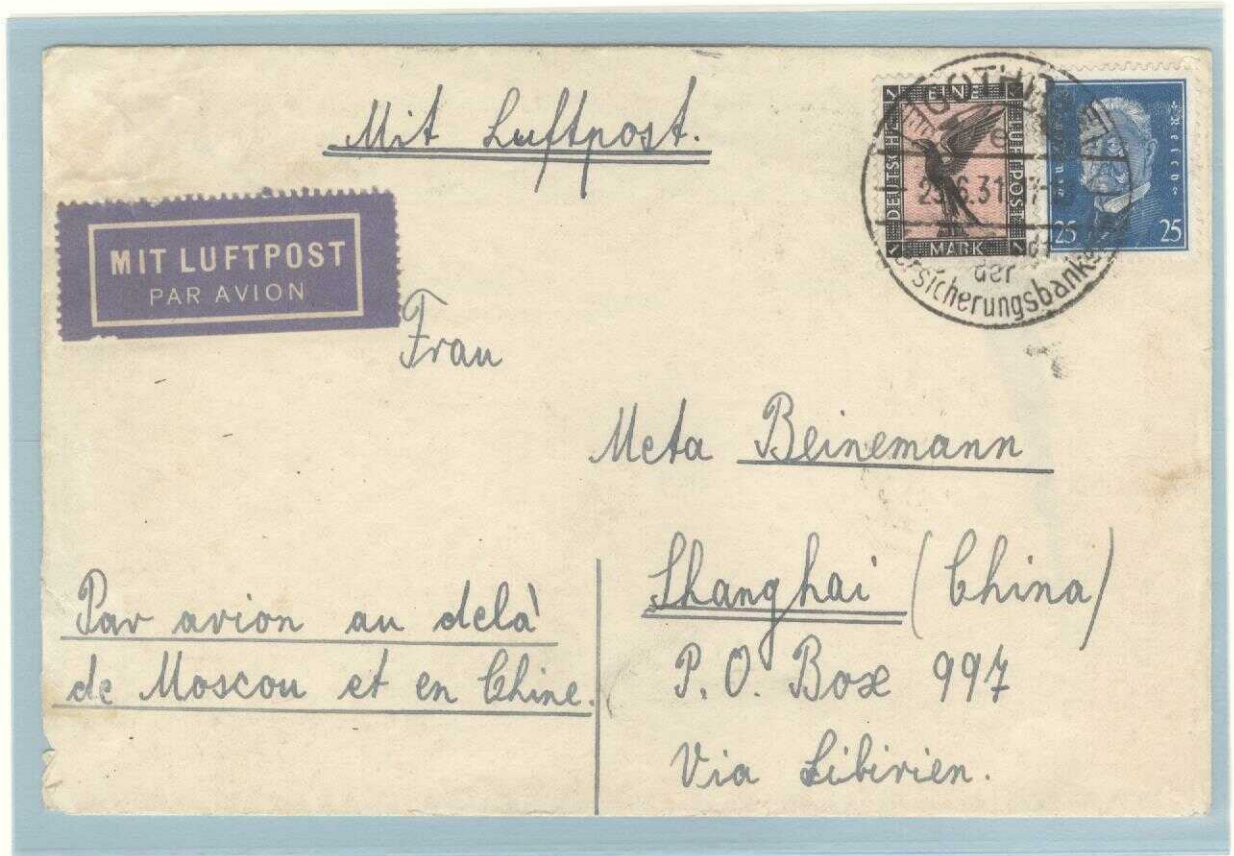
RESUMPTION & EXPANSION OF MAIL SERVICES  
1923 - 1931

1931 .. 'Via Siberia'  
DERULUFT & EURASIA Airmail

In February 1930, 'Eurasia Aviation Corporation' (China) was established with commencement of service in 1931 having three main routes, one of which was Shanghai to Manchouli (Manchuria).

Together with the earlier-established air carriers **DERULUFT/DOBROLET & EURASIA**, using the rail network, enabled movement of mail by 'air-land-air' from Shanghai to Berlin in less time than by rail alone.

**BY 1931, EUROPEAN AIRMAIL COULD BE SENT FROM BERLIN TO IRKUTSK WITH DERULUFT-DOBROLET AIRLINES, THEN BY RAILWAY FROM IRKUTSK TO MANCHOULI (Manchuria), THEN AGAIN BY EURASIA AIRLINES FROM MANCHOULI-PEKING-SHANGHAI**



This cover was on the third last flight on the Manchouli Route (5<sup>th</sup> flight from Berlin), since another plane on the same route was shot down on 2 July 1931, whereupon air traffic was interrupted. Occupation of Manchuria by Japanese Forces in September 1931 ended the air route Manchouli-Peking.

25 JUNE 1931

Airmail cover, postmarked  
at Gotha, Germany, with route-endorsement  
"Par avion au dela de Moscou et en Chine" & "Via Siberia"  
sent to Shanghai, China. 17-day transit time.

Transit & Arrival Postmarks:

(Reverse)

"Berlin, 26 June 1931"

"Manchouli, 7 July 1931"

"Shanghai, 11 July 1931"

RM 1.25..

25 Pfg.. UPU Single-Weight (20 grams) International Letter-Rate +  
1.00.. Single weight airmail surcharge

**RESUMPTION & EXPANSION OF MAIL SERVICES  
1923 - 1931**

**1931 .. Rail & Airmail  
to North America**

North American-Bound mail from Western Siberia  
was routed  
**BY RAIL TO MOSCOW, AIRMAIL TO BERLIN WITH LUFTHANSA & SURFACE TO AMERICA.**



**COMMERCIAL REGISTERED MAIL FROM WESTERN SIBERIA  
TO THE UNITED STATES OF AMERICA**

**Sender was an American engineer working for Freyn Engineering Company of Chicago, contractor to build a steel plant at Kuznetsk. Wellman Engineering Company of Cleveland, the recipient, manufactured equipment for the plant.**

**12 SEPTEMBER 1931**

Registered commercial airmail, postmarked Kuznetsk, Siberia, sent to Cleveland, Ohio, U.S.A., 17-day transit time.

**Transit & Arrival Postmarks  
(Reverse)**  
 "Kuznetsk, 12 September 1931"  
 "Berlin, 17 September 1931"  
 "New York, 25 September 1931"  
 "Cleveland, 29 September 1931"

**Route:**  
 Rail.. Kuznetsk-Tomsk-Moscow  
 Air.. Moscow-Berlin  
 Surface.. Berlin-Hamburg-New York-Cleveland

**70 Kopecks..  
Single-weight (20 grams) international registered airmail**



Reverse

RESUMPTION & EXPANSION OF MAIL SERVICES  
1923 - 1931

1931 .. Northern Rail Route  
Japan-Austria

Despite political and border tensions between Russia & Japan involving Manchuria, mail sent from Japan to Europe continued to be moved by sea from Tsuruga, Japan, to Vladivostok, Russia, and then continued **OVER THE "NORTHERN" ALL-RUSSIA TRANS-SIBERIAN RAIL ROUTE TO MOSCOW-BERLIN AND BEYOND.**



JAPAN-AUSTRIA REGISTERED COMMERCIAL MAIL

19 DECEMBER 1931  
(Japanese Post Office)

Commercial registered cover, postmarked  
Tokyo, Japan, with route endorsement  
"Via Siberia",  
sent to Vienna, Austria.

Route:  
Tokyo-Tsuruga- (by-sea) to Vladivostok-  
(by-rail) to Irkutsk-Moscow-Berlin-Vienna

26 Sen..  
10 Sen.. Single-weight (20 grams) international letter-rate  
+  
16 Sen.. Registration fee



RESUMPTION & EXPANSION OF MAIL SERVICES  
1923 - 1931

1931 .. China-Germany Mail  
Prior to 'Mukden Incident' &  
Japanese Invasion of Manchuria

Under the pretense that the Chinese were sabotaging the railroad between Mukden & Port Arthur in Manchuria (the so-called "MUKDEN INCIDENT"), JAPANESE FORCES STATIONED IN KOREA INVADED MANCHURIA ON 18 SEPTEMBER 1931, CONSIDERED TO BE THE "UNOFFICIAL START" OF WORLD WAR II.



PRINTED-MATTER MAIL  
TO GERMANY  
JUST PRIOR  
TO THE "MUKDEN INCIDENT"

10 AUGUST 1931  
(Chinese Post Office)

Printed-matter wrapper,  
postmarked at  
Tientsin, China, with route  
endorsement  
*"Via Siberia"*,  
sent to Holzminden, Germany.

Route:  
Tientsin-Peking-Mukden-Harbin-  
Irkutsk-Moscow-  
Berlin-Brunswick-Holzminden

4 Cents..  
UPU International  
Printed-Matter Rate  
(up to 50 grams)