

HOSTILITIES & WAR IN MANCHURIA & CHINA
1931-1939

1939-41.. Refugee Mail
to Shanghai

HAVING NO VISA REQUIREMENTS, AN ESTIMATED TWENTY THOUSAND EUROPEAN JEWS
FOUND TEMPORARY HOMES AT SHANGHAI
with some starting businesses, schools, theaters, etc., until they could obtain
visas to America, Australia, etc., or continued residency

MUNICH-SHANGHAI
"ISAAC"
CENSORED
MAIL
24 JANUARY
1941

Cover,
postmarked at
Munich,
Germany, with
route
endorsement
"Via Siberia"
sent to
Shanghai, China.

Route:
Munich-Berlin-
Moscow-Irkutsk-
Harbin-Mukden-
Tientsin-Pukow-
Shanghai



Via Sibierien ² China



BERLIN-SHANGHAI
"SARA"
CENSORED
MAIL
16 APRIL 1941

Cover,
postmarked at
Berlin.
Germany,
with route
endorsement
"via Siberia"
sent to
Shanghai,
China.

Route:
Berlin-
Moscow-
Irkutsk-
Harbin-
Mukden-
Tientsin-
Pukow-
Shanghai

25 Pfennig ...
Single-weight (20 grams) international letter-rate.
(Validity: 1 January 1925 - April 1945)

HOSTILITIES & WAR IN MANCHURIA & CHINA
1931-1939

1937-41.. Jewish Refugee Mail
from Shanghai

SHANGHAI-
VIENNA
CENSORED
MAIL

12 FEBRUARY
1940

Cover,
postmarked
Shanghai, China,
with route
endorsement
"Via Siberia"
sent to Vienna,
Austria.

Route:
Shanghai-
Pukow-Tientsin-
Mukden-Harbin-
Irkutsk-Moscow-
Berlin-Vienna

CNC 0.50...
Single-weight
(20 grams)
international
letter-rate
(Validity:
1 Sept. 1939 -
31 Oct. 1941)



SHANGHAI-
FRANKFURT/
MAIN
CENSORED MAIL

16 APRIL 1941

Postcard,
postmarked at
Shanghai, China,
with route
indication
"Via Siberia"
sent to
Frankfurt/Main
Germany.

Route:
Shanghai-Pukow-
Tientsin-Mukden-
Harbin-Irkutsk-
Moscow-Berlin-
Frankfurt/Main

CNC 0.30...
International
postcard-rate
(Validity:
1 Sept. 1939 -
Oct. 31, 1941)

IX. WORLD WAR II & ITS EFFECTS
1939-1945

1939.. Eve of WWII
 In-Transit 'Via Siberia' Mail

MAIL BAGS IN TRANSIT TO SOVIET-FRIENDLY NATIONS
ON 1 SEPTEMBER 1939
CONTINUED TO BE FORWARDED TO THEIR RESPECTIVE EUROPEAN
AND OTHER DESTINATIONS

PALESTINE-BOUND
MAIL FROM
MANCHUKUO

20 AUGUST 1939

View-card,
 postmarked at Harbin,
 Manchuria,
 with route
 endorsement
 "Via Siberia"
 sent to Tel Aviv,
 Palestine, British-
 censored,
 upon arrival.

Probable Route:
 Harbin-Irkutsk-
 Samara-Tiflis-Istanbul-
 (by sea) to Tel Aviv

4 Fen..
 UPU International
 Postcard-Rate.



SWITZERLAND-BOUND
MAIL FROM CHINA

24 AUGUST 1939

View-card,
 postmarked at
 Shanghai, China, with
 route endorsement
 "Switzerland via
 Siberia"
 sent to Thun,
 Switzerland.
 29-day transit time.

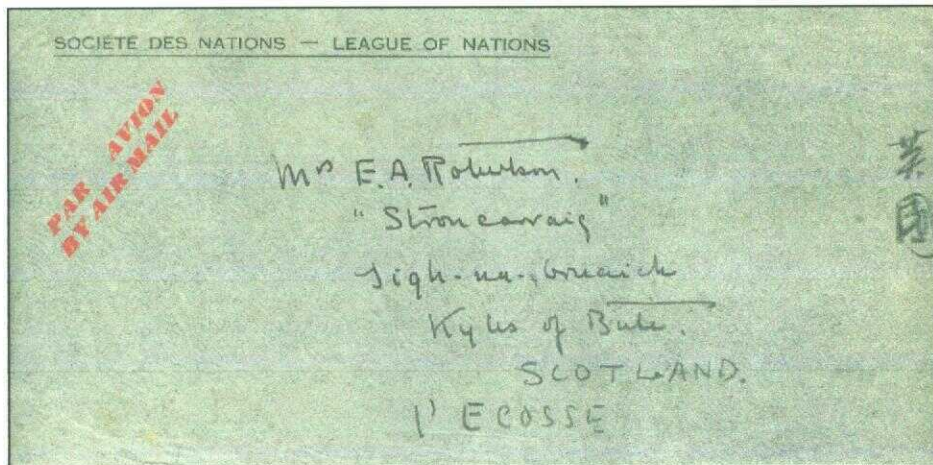
Manuscript Arrival
 Inscription:
 "22 September 1939"

Probable Route:
 Shanghai-Pukow-
 Tientsin-Mukden-
 Harbin-Irkutsk-
 Moscow-Berlin-Basel-
 Zürich-Thun



WORLD WAR II & ITS EFFECTS
1931-1939

1939.. Eve of WWII Airmail
'Via Siberia'
China-Russia-England



"England"
 (Chinese)

Front



Reverse

**'LEAGUE OF NATIONS'
 MAIL
 TO SCOTLAND**

11 AUGUST 1939
 (China Post Office)

**Cover, postmarked at
 Kuming (Yunnanfu),
 China, with
 endorsement
 "By Airmail"
 to Scotland.**

Probable Route:
 (Hamiata Airlines)

**Kunming-Chungking-
 Alma-Ata- (by rail)
 Moscow- (airmail)
 Berlin-London-
 Scotland**

**\$4.15 ...
 25+15 Cents.. Double-
 weight
 (40 grams)
 International letter-rate
 +
 \$3.75.. Airmail
 Surcharge
 (0.75/5 grams)
 (Validity: 23 July 1932 -
 5 December 1939)**

**War in Europe
 commenced on
 1 September 1939
 with this mail arriving in
 England just prior.**

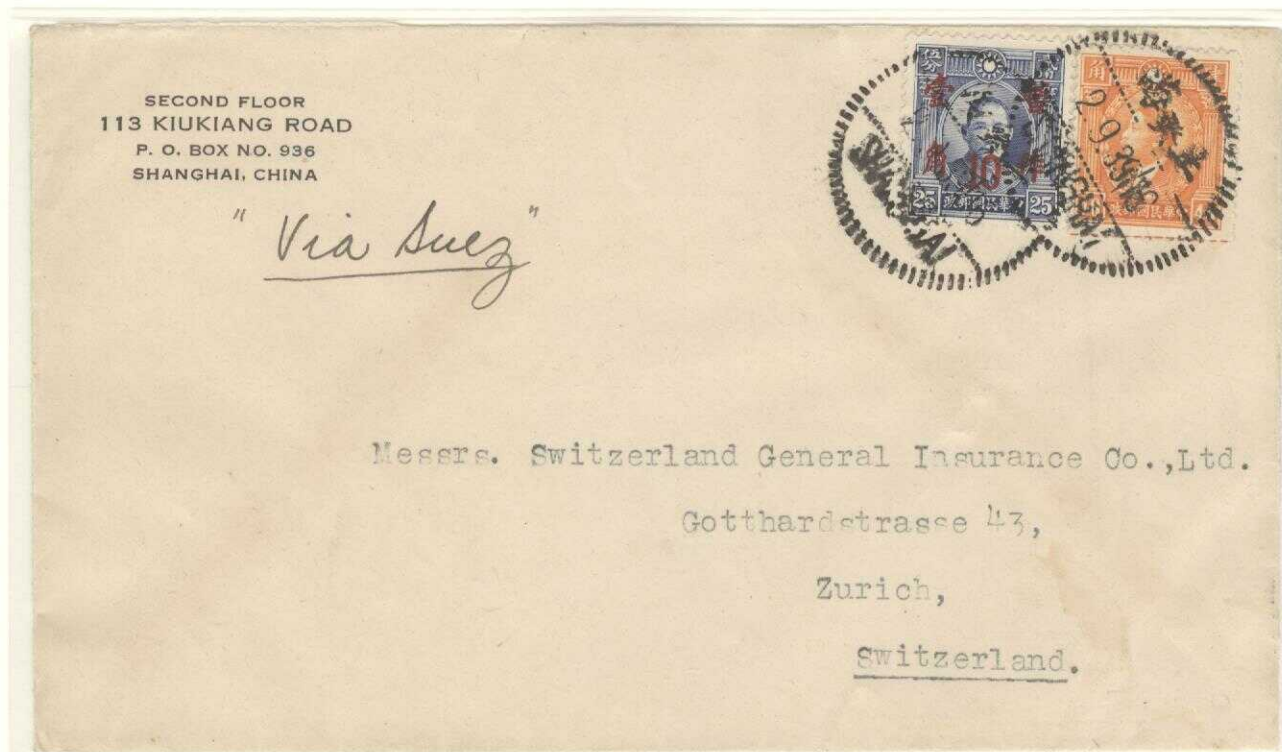
**WORLD WAR II & ITS EFFECTS
1939-1945**

**1 September 1939..
Outbreak of War in Europe
"Via Suez" Mail**

On 23 August 1939, Germany & the Soviet Union signed a non-aggression pact avoiding early potential conflict between themselves for what would take place in September by German Forces.

On 1 September 1939, using a pretext of a German border-post being attacked by Polish troops, German Forces invaded Poland, resulting in Britain et al nations declaring war on Germany on 3 September.

EFFECTIVE 2 SEPTEMBER 1939, MAIL TO EUROPE FROM CHINA 'VIA THE SIBERIAN RAILWAY NETWORK' WAS INTERRUPTED, REQUIRING OTHER ROUTES TO BE UTILIZED FOR EUROPEAN NON-BELLIGERENT-NATION MAIL, SUCH AS INITIALLY BY SEA "VIA SUEZ".



**EARLY-WORLD WAR II CHINA-ORIGIN MAIL ROUTED
TO SWITZERLAND "VIA SUEZ"**

2 SEPTEMBER 1939

Commercial cover,
postmarked at Shanghai, China, with route-endorsement
"Via Suez"
sent to Zürich, Switzerland.

Probable Route:
Shanghai-Singapore-Aden-
Suez Canal-Naples- (by rail) Zurich

**CNC 0.50 ...
Single-weight international (20 grams) letter-rate.**

WORLD WAR II & ITS EFFECTS
1939-1945

1939 .. Reopening of
'Via Siberia' Routed Mail

Upon conclusion of the German-Soviet Non-Aggression Pact of 1939,
Relations between the two countries remained stable.

UPON GERMAN OCCUPATION OF POLAND IN SEPTEMBER 1939, AXIS-COUNTRY
MAIL ROUTED 'VIA SIBERIA' WAS AGAIN POSSIBLE BY 'AUTUMN 1939' UNTIL
'22 JUNE 1941'.



LATE 1939 GERMAN-ORIGIN CENSORED MAIL TO THE
UNITED STATES OF AMERICA
"VIA SIBERIA & JAPAN"

20 DECEMBER 1939

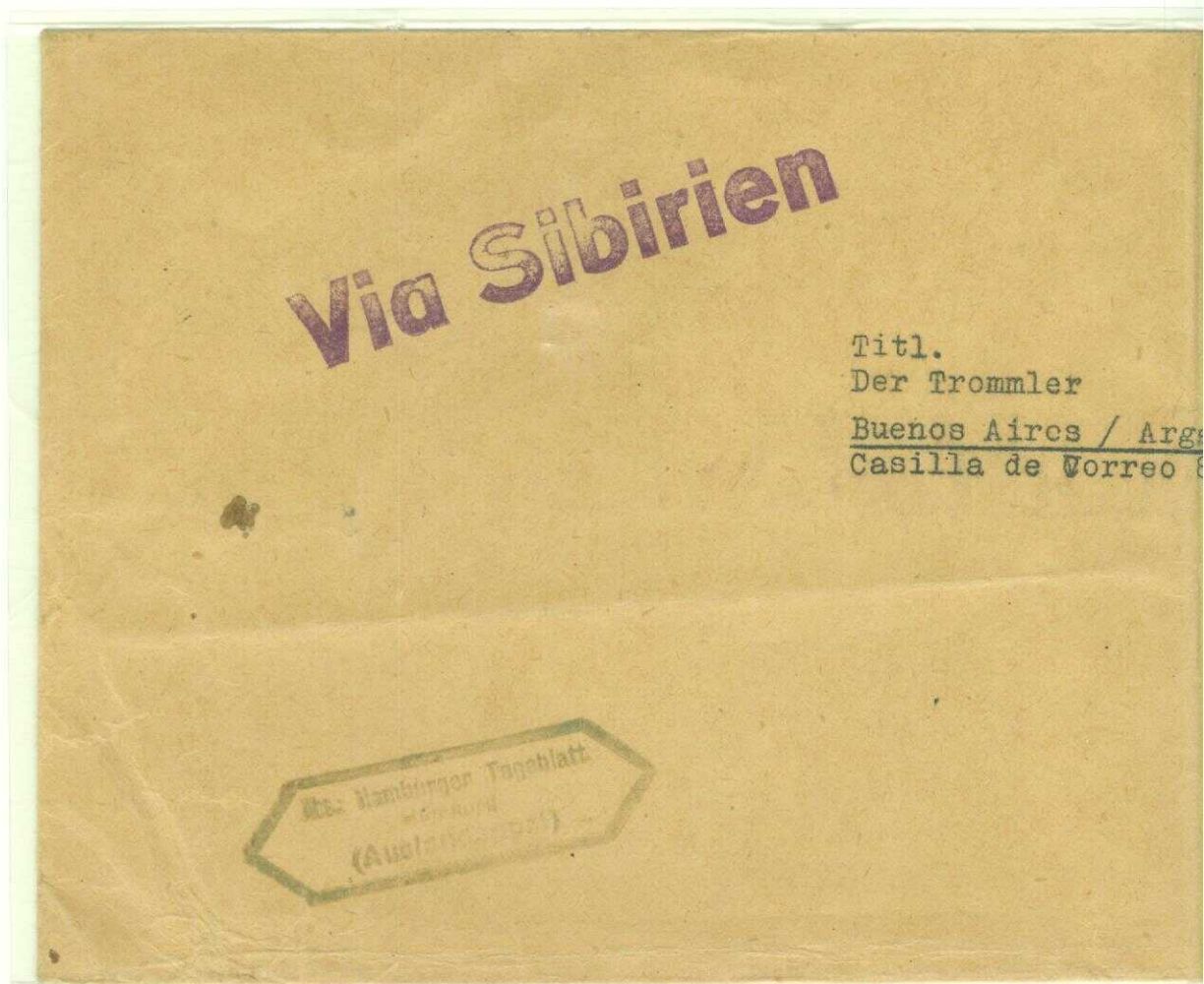
Cover, postmarked at Rothenbach (Waldenburg),
Province Silesia, with route endorsement
"Over Siberia" & Japan"
sent to Binghamton, New York.

Probable Route:
Rothenbach-Berlin-Moscow-Irkutsk-Tschita-Charborowsk-Vladivostok-
(by sea) to Japan & San Francisco- (overland) to New York-Binghamton

25 Pfennig...
Single-weight international letter-rate.
(Validity: 1 January 1925 - April 1945)

**WORLD WAR II & ITS EFFECTS
1939-1945**

**AS A RESULT OF WAR CONDITIONS IN EUROPE AND THE
PREVAILING BLOCKADE OF GERMAN COMMERCIAL SHIPPING TO
SOUTH AMERICA, MAIL DESTINED FOR ARGENTINA HAD TO MOVE
'VIA SIBERIA' TO VLADIVOSTOK, THEN TO SAN FRANCISCO
(EITHER VIA JAPAN OR DIRECT), OVERLAND TO NEW YORK,
AND THEN BY SEA TO ARGENTINA.**



SPECIAL GERMAN REDUCED OVERSEAS-BOUND PRINTED-MATTER RATE

15 NOVEMBER 1940

**Special reduced German-rate for printed-matter,
postmarked at Hamburg, Germany, with route endorsement**

"Via Siberia" &

"Drucksache zu ermäßigter Gebühr"

sent to Buenos Aires, Argentina.

1940.. Germany-Argentina

'Via Siberia'

Printed-Matter Mail



Probable Route:

Hamburg-Berlin-Moscow-Irkutsk-Tschita-Charborowsk-Vladivostok-
(by sea) to **San Francisco** (via Japan or direct) -
New York- (by sea) to **Buenos Aires**

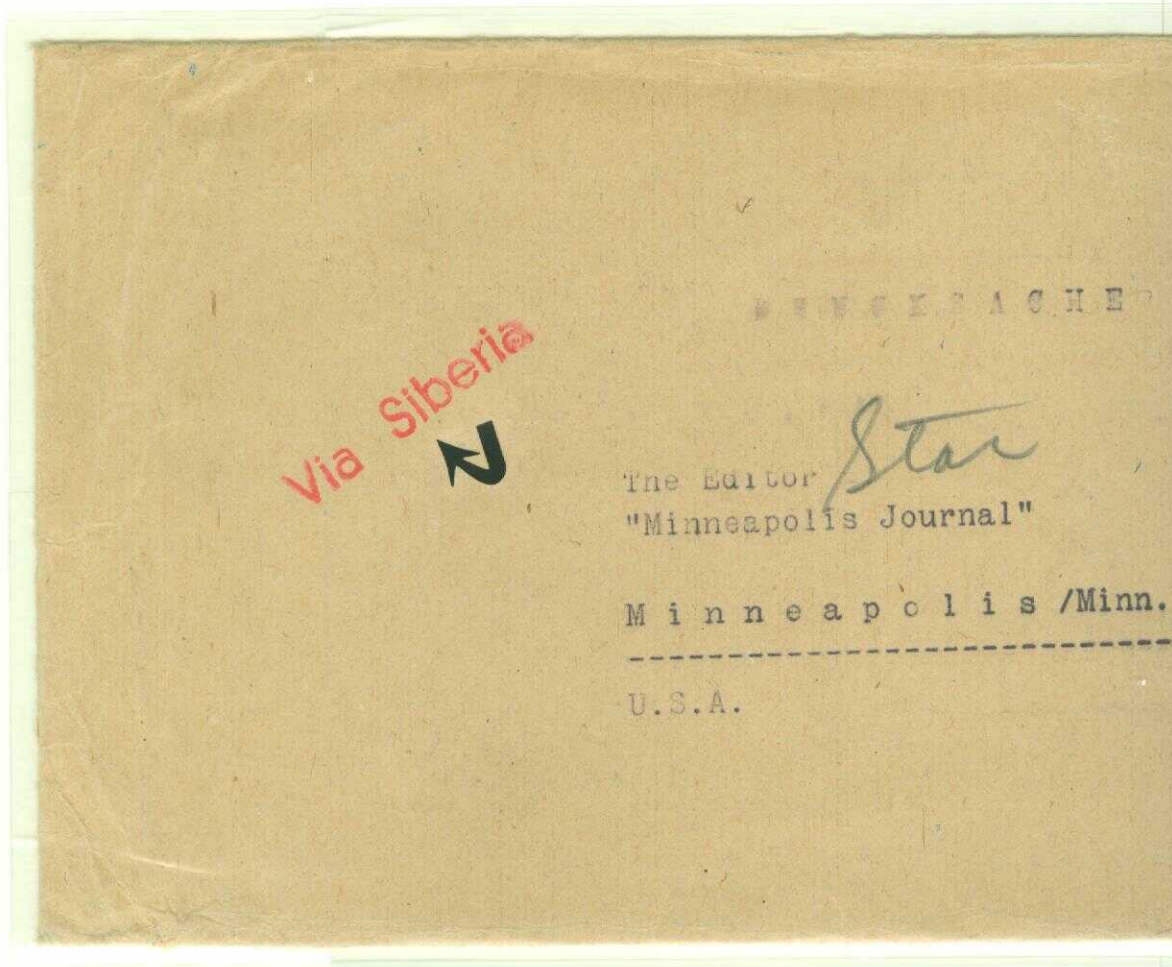
5 Pfennig...

International-bound printed-matter

German-concession reduced-rate for mail weighing up to 100 grams

**WORLD WAR II & ITS EFFECTS
1939-1945**

**BECAUSE OF WAR CONDITIONS IN EUROPE, THE ONLY
SURFACE ROUTE AVAILABLE FOR PRINTED-MATTER TO BE
SENT TO THE UNITED STATES OF AMERICA BETWEEN
AUTUMN 1939 – JUNE 1941 WAS 'VIA SIBERIA'**



PRINTED-MATTER .. UNITED STATES OF AMERICA BOUND MAIL

11 JUNE 1940

**Newspaper/printed-matter,
postmarked at Munich, Germany, with route endorsement
"Via Siberia"
sent to the "Minneapolis Journal" at
Minneapolis, Minnesota, USA.**

1940.. Germany-U.S.A.
'Via Siberia'
Printed-Matter Mail



Probable Route:

Munich-Berlin-Moscow-Irkutsk-Tschita-Charborowsk-Vladivostok-
(by sea) to **San Francisco** (via Japan or direct) – (overland) to
Minneapolis

10 Pfennig...
International-bound printed-matter
at standard-rate for mail weighing up to 100 grams

WORLD WAR II & ITS EFFECTS
1939-1945

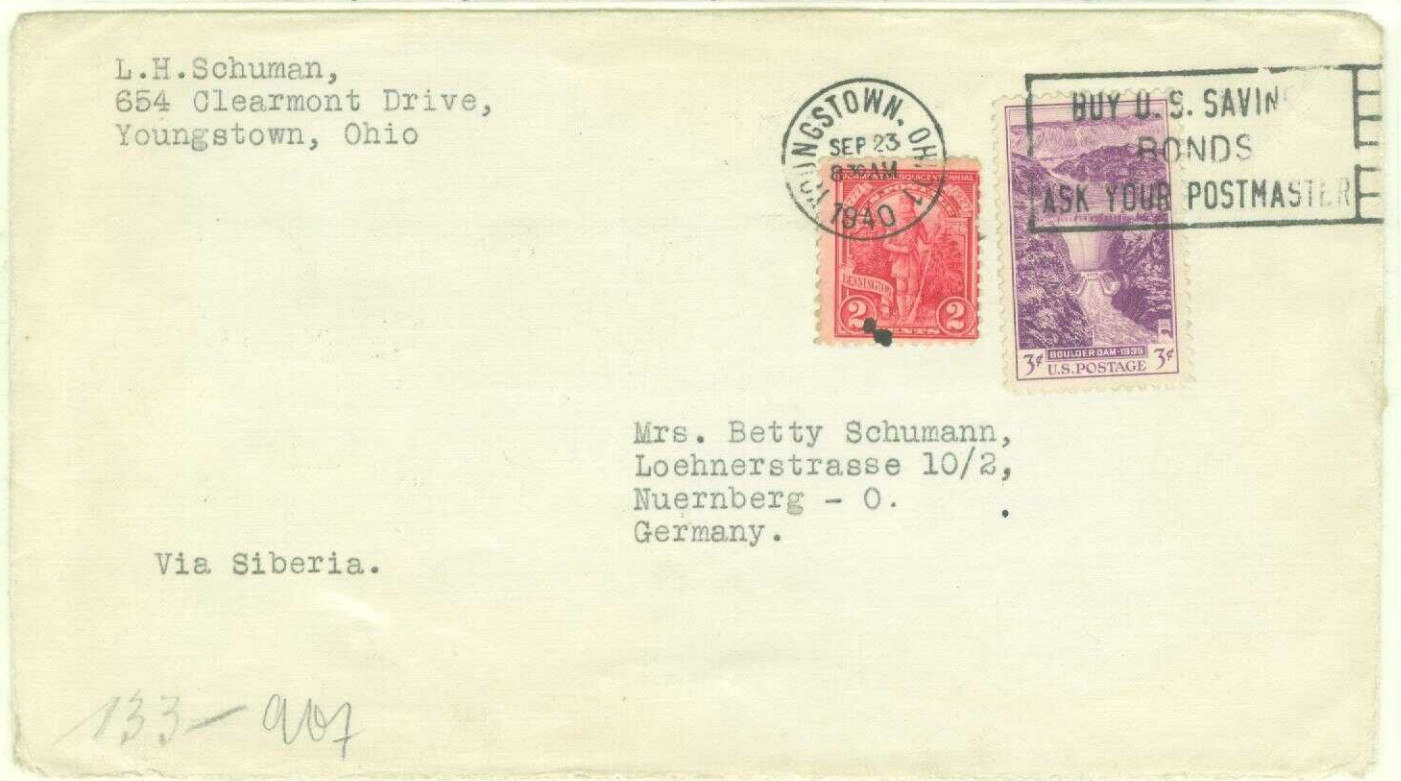
1940.. U.S.A.-Germany
'Via Siberia' Mail

WARTIME CENSORED U.S.A-ORIGIN MAIL TO GERMANY



2 MARCH 1940

Chicago, Illinois, postmarked commercial cover,
route endorsement "*Japanese Steamer to Japan, Thence via Siberia*",
British-censored (Bermuda), German-censored (Frankfurt/Main) sent to Hamburg, Germany.



23 SEPTEMBER 1940

Youngstown, Ohio, postmarked cover, route endorsement "*Via Siberia*",
German-Censored (Frankfurt/Main), sent to Nuremberg, Germany.

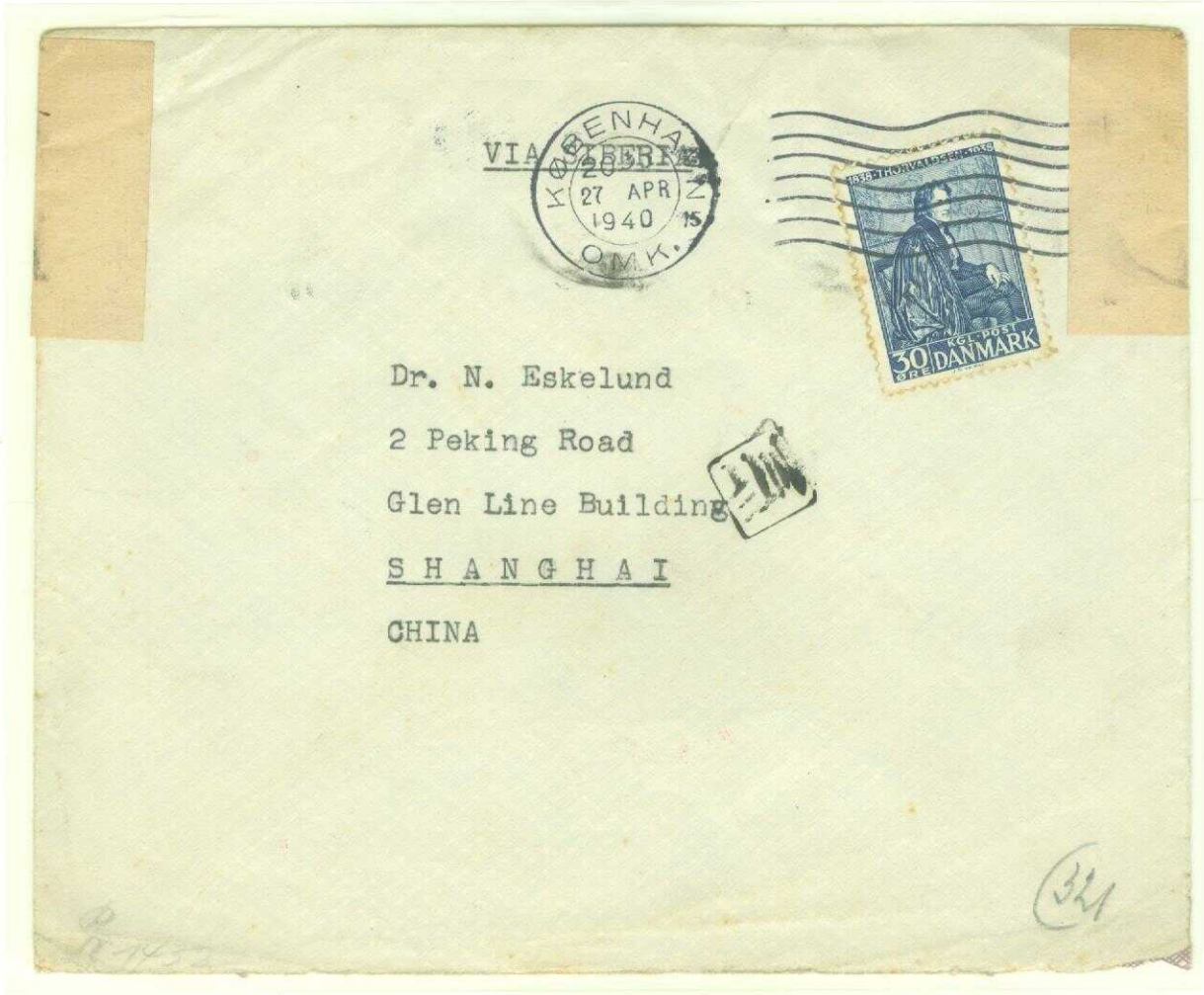
Probable Route:

Youngstown-San Francisco-(by sea) to Yokohama-Tsuruga-Vladivostok- (by rail) Charbarowsk-
Tschita-Irkutsk-Moscow-Berlin- Frankfurt-Nuremberg

WORLD WAR II & ITS EFFECTS
1939-1945

1940.. Denmark-China
'Via Siberia'
German Censored Mail

**ON 9 APRIL 1940, GERMAN FORCES OCCUPIED DENMARK,
WHEREUPON ALL FOREIGN-BOUND MAIL
WAS HENCEFORTH CENSORED BY THE
'HIGH COMMAND OF THE GERMAN MILITARY'.**



**EARLY-OCCUPIED-DENMARK GERMAN-CENSORED
MAIL TO CHINA**

27 APRIL 1940

Early German-Censored cover,
(soon after occupation by German Forces)
postmarked at Copenhagen, Denmark, with route
endorsement
"Via Siberia"
sent to Shanghai, China. 30-day transit time.

Arrival Postmark:
(Reverse)
"Shanghai, May 27, 1940"

Probable Route:
**Copenhagen-Berlin-Moscow-Irkutsk-Harbin-Mukden-
Tientsin-Pukow-Shanghai**



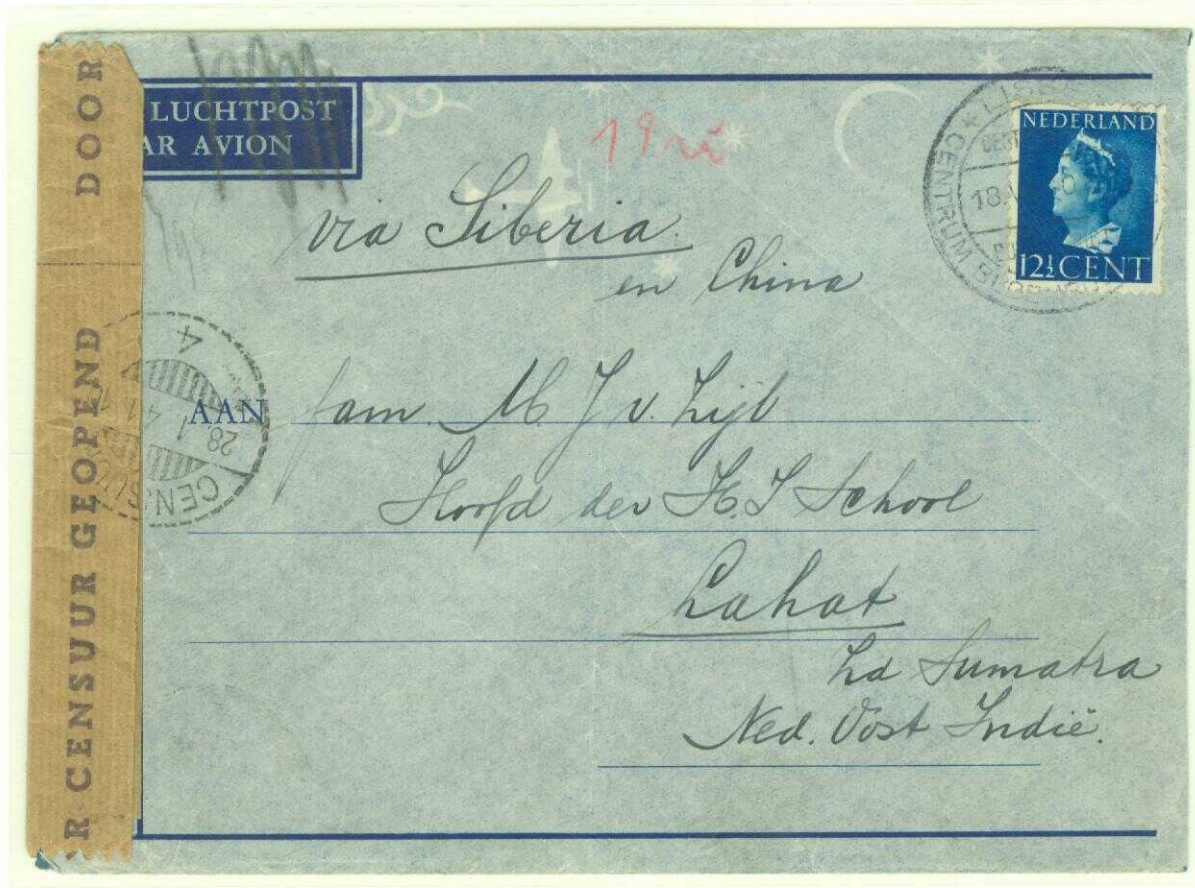
Reverse

30 Ore...
Single-weight (20 grams) international letter-rate

**WORLD WAR II & ITS EFFECTS
1939-1945**

**1940.. Netherlands-Dutch East Indies
'Via Siberia & China'
German & Dutch Censored Mail**

**ON 10 MAY 1940, ALL DUTCH MAIL SERVICES STOPPED UPON THE GERMAN
INVASION OF HOLLAND, AGAIN STARTING DOMESTICALLY ON 29 MAY,
WITH MAIL TO THE DUTCH EAST INDIES ONLY POSSIBLE BETWEEN
22 JUNE – 23 JULY 1940 FOR THE REMAINDER OF WORLD WAR II
(Dutch/German Postal Service Order H.304.bis)
BY WAY OF THE TRANS-SIBERIAN RAIL NETWORK & CHINA**



**OCCUPIED NETHERLANDS GERMAN-CENSORED
MAIL TO THE DUTCH EAST INDIES BY WAY OF SIBERIA & CHINA**

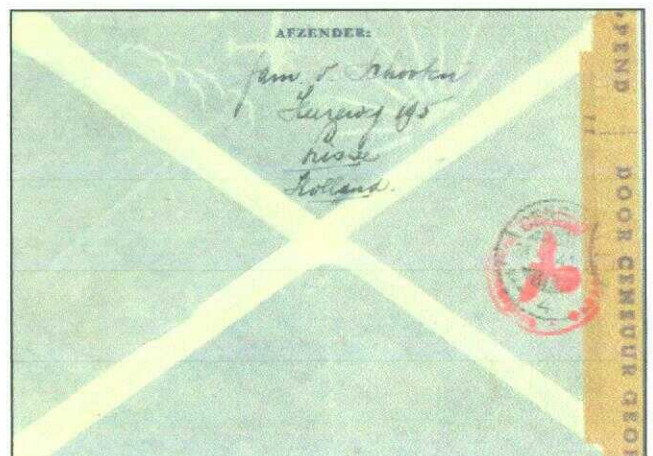
18 JULY 1940

Late-usage German-Censored Dutch-origin mail
(during 22 June- 23 July 1940 mail period)
postmarked at Lisse, Netherlands
("Flower Bulb Center"),
with route endorsement "**Via Siberia & China**"
sent to Lahat, Sumatra, Dutch East Indies, with Dutch-
Colonial censorship. 194(+)-day transit time.

Arrival Censor Postmark:
"Censor (Dutch East Indies),
28 January, 1941"

Probable Route:
Lisse-Berlin-Moscow-Irkutsk-Harbin-Mukden-
Tientsin-Pukow-Shanghai-(by sea) to Sumatra

**12½ Cent...
Single-weight (20 grams)
UPU International Surface-Mail Letter-Rate**



Reverse

**WORLD WAR II & ITS EFFECTS
1939-1945**

**1940.. China-Austria
'Via Siberia'
Censored Registered Wartime Mail**



4 SEPTEMBER 1940

Registered censored cover,
postmarked at Tehchow (Shandong), China,
with route endorsement
"Via Siberia"
sent to Vienna (Austria), "Greater Germany".
22-day transit time.

Transit Postmark:
(Reverse)
"Tientsin,
5 September 1940"

Arrival Postmark:
(Reverse)
"Vienna,
26 September 1940"

Probable Route:
Tehchow-Tientsin-Mukden-Harbin-Irkutsk-Moscow-
Berlin-Munich-Vienna

CNC 0.50 Cents...
Short-franked 50% by postal-clerk who was not
aware of the rate increase on
1 September 1939!
**0.25.. Single-weight (20 grams) international letter-rate
+ 0.25 Registration fee.**
(Validity: 1 February 1936 -31 August 1939)

**SHORT-FRANKED REGISTERED & CENSORED
CHINA-AUSTRIA WARTIME MAIL**

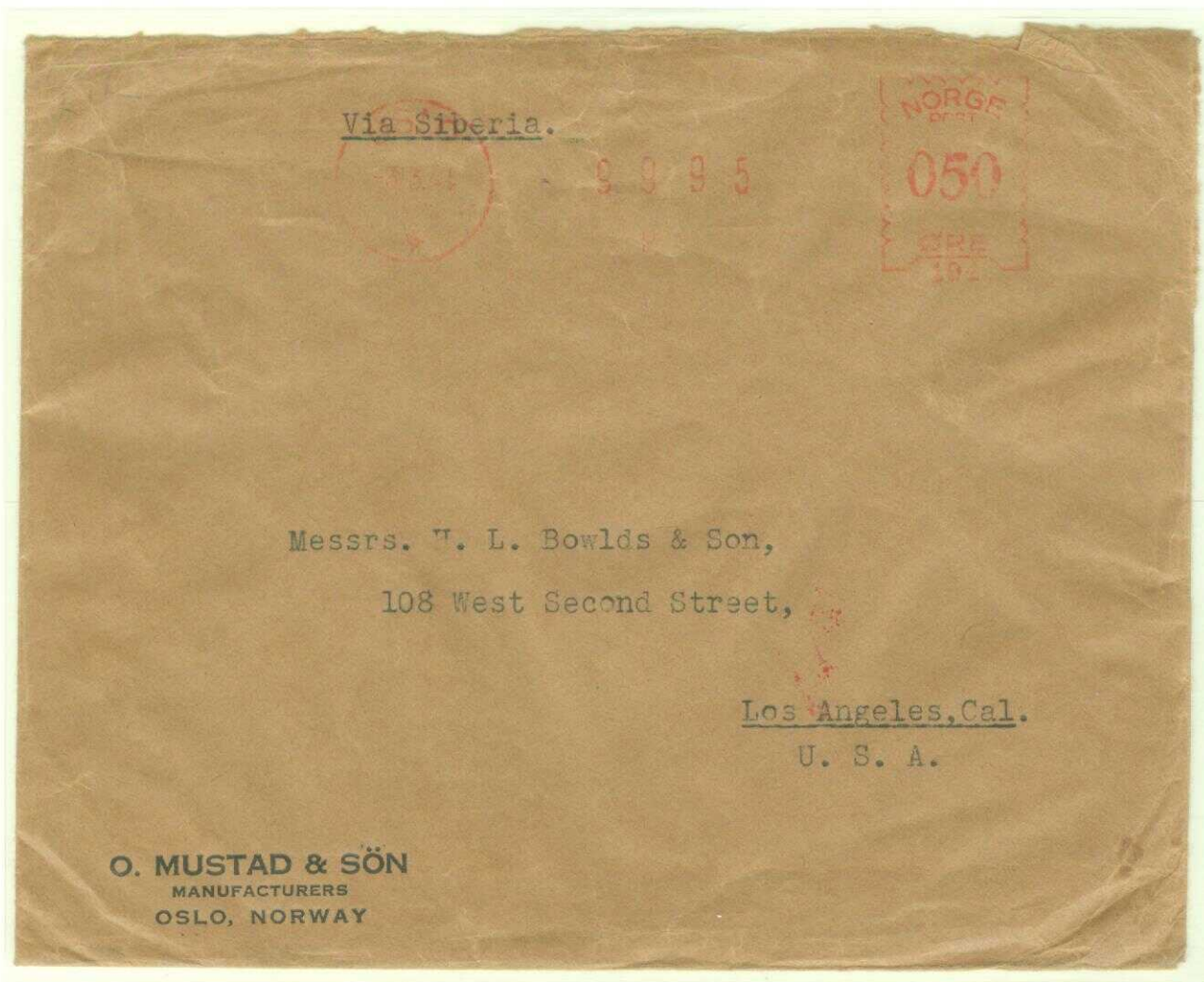


Reverse

**WORLD WAR II & ITS EFFECTS
1939-1945**

**1940-1941.. Norway-U.S.A.
'Via Siberia & Japan'
German Censored Mail**

**ON 10 APRIL 1940, NORWEGIAN FORCES SURRENDERED
TO GERMAN OCCUPATION FORCES,
WHEREUPON ALL NORWEGIAN FOREIGN-BOUND MAIL WAS
HENCEFORTH CENSORED BY THE GERMAN MILITARY.**



**GERMAN-CENSORED NORWEGIAN COMMERCIAL MAIL
VIA SIBERIA & JAPAN
TO THE UNITED STATES OF AMERICA**

3 MARCH 1941

Commercial cover,
meter-postmarked at Oslo, Norway,
with route endorsement
"Via Siberia",
sent to Los Angeles, California, USA,

Probable Route:
Oslo-Berlin-Moscow-Irkutsk-Vladivostok-
Tsuruga-Kobe-San Francisco

50 Ore...
Single-weight (20 grams)
UPU International Surface-Mail Letter-Rate



Reverse

**WORLD WAR II & ITS EFFECTS
1939-1945**

**1940.. China – Occupied France
“Two Ocean” Airmail**

BECAUSE OF THE SUSPENSION OF ‘AIR FRANCE’ FAR EAST SERVICE TO EUROPE IN JUNE 1940, FRANCE-BOUND MAIL WAS DIVERTED TO HONG KONG FOR “TWO OCEAN” AIRMAIL SERVICE CHINA-U.S.A.-PORTUGAL-FRANCE.



21 JUNE 1940

WARTIME COMMERCIAL MAIL CHINA-FRANCE

Cover, postmarked at Shanghai, China, route endorsement
 “By first mail to Hong Kong” &
 “Diverted by air via USA owing to suspension of Air France Service”
 sent to Lyon, France, with British censorship at Hong Kong. 98-day transit time.

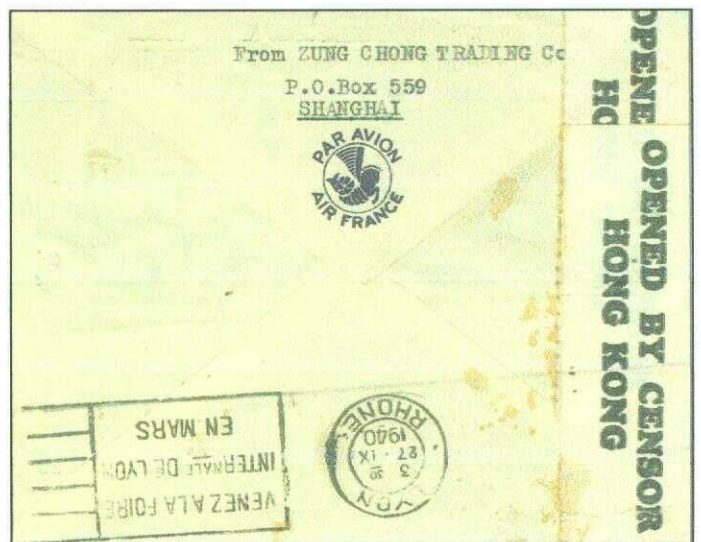
Mail delay because of British censorship at Hong Kong, German occupation of Lyon commencing on 20 June 1940 and discontinuance of Far East ‘Air France’ Service.

Arrival Postmark:
 (Reverse)
 “Lyon, Rhone, 27 September 1940”

Probable Route:
 Shanghai-Hong Kong-Manila-Guam-Midway Island-Honolulu-San Francisco-New York-Horta-Lisbon-Lyon

**CNC 2.25...
 0.25 Airmail surcharge for China only +
 2.00 ‘Air France’ airmail (5 grams) letter-rate ..**

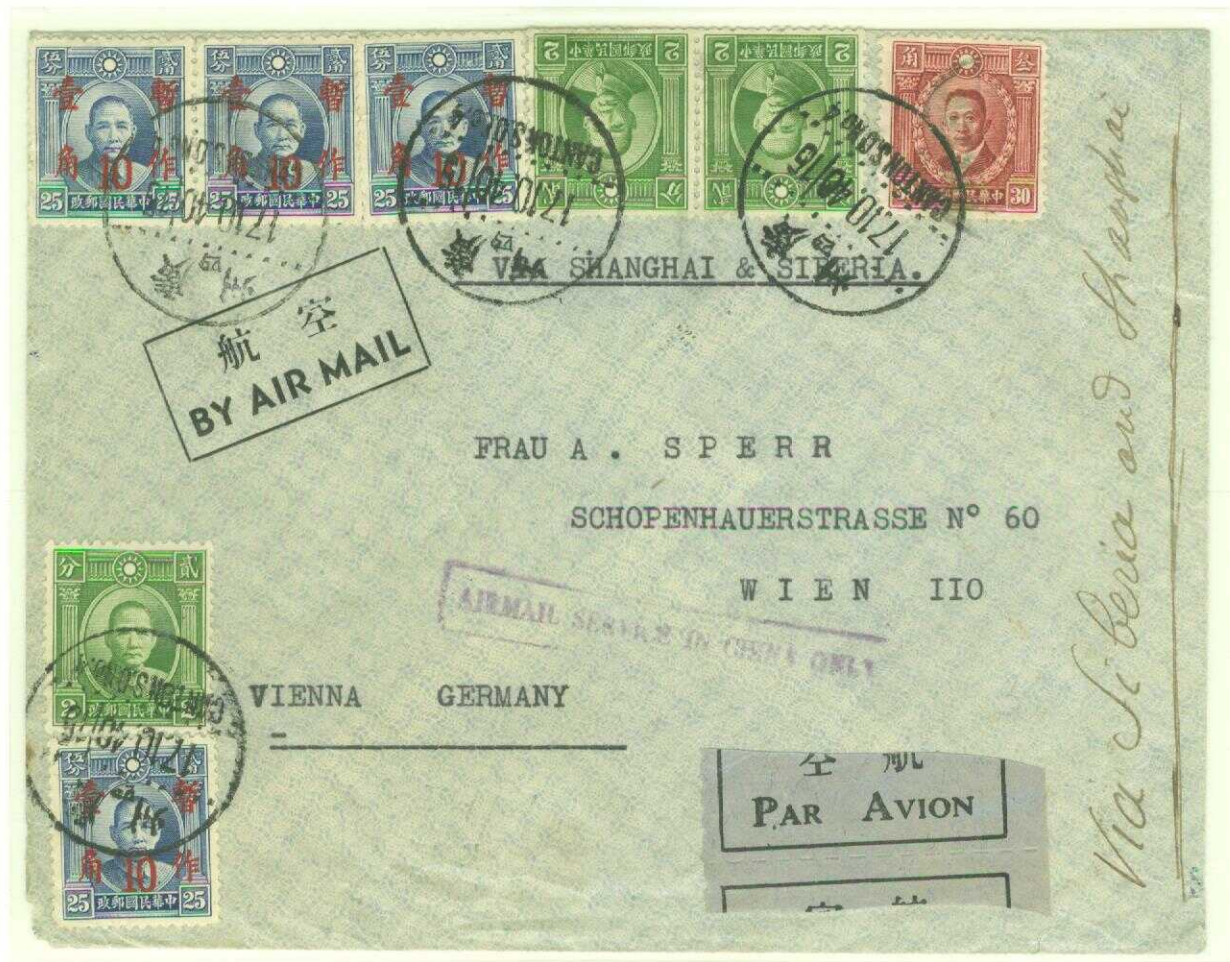
(Validity: 1 September 1939 – 20 September 1940)



Reverse

**WORLD WAR II & ITS EFFECTS
1939-1945**

**1940.. China-Austria
Airmail in China/'Via Siberia' Route**



CANTON-SHANGHAI AIRMAIL & RAILWAY TO AUSTRIA

17 OCTOBER 1940

Censored cover, postmarked at Canton, China, with route endorsement "Via Shanghai & Siberia" sent to Vienna, Austria.

Probable Route:

Canton- (by air) to Shanghai- (by sea) to Vladivostok- (by rail) to Charborowsk-Tschita-Irkutsk-Moscow-Berlin-Munich-Vienna

CNC 0.76...

**0.50 International single-weight (20 grams) letter-rate +
0.25 Airmail surcharge for China only +
0.01 Convenience over-franking.**

(Validity: 1 September 1940 – 31 October 1941)



Reverse

WORLD WAR II & ITS EFFECTS
1939-1945

1940.. China-Moscow
'Via Alma Ata' Airmail
Bypassing 'Via Siberia' Route

As a result of Japanese-occupation of northern China and its interference of mail from non-occupied southern China as well as to strengthen communications between 'free' China with Moscow & Europe, bypassing the still-operational 'via Siberia' route,
CHINA AGREED WITH THE SOVIET UNION TO ESTABLISH THE 'SINO-SOVIET AVIATION CORPORATION' ENABLING AIR SERVICE FROM CHUNGKING & KUNMING TO ALMA ATA ('CHUNGKING-HAMI LINE') AND BEYOND TO MOSCOW & EUROPE.

Although the agreement was concluded in 1939, operation of the route by air first commenced on 8 April 1940 and ended on 3 July 1941.



17 DECEMBER 1940

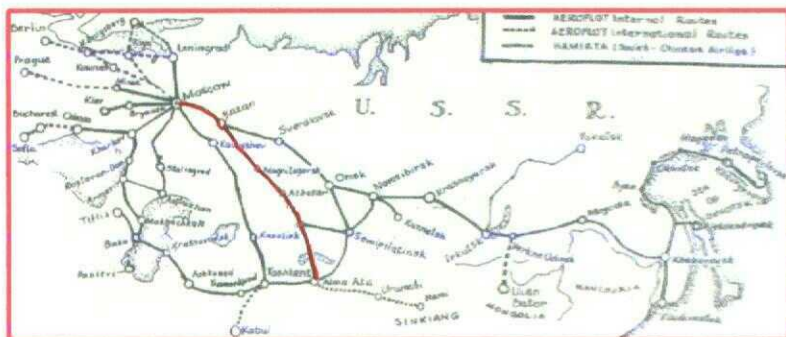
Single-weight registered, postmarked at Kunming, China, with route endorsement "Via Alma Ata", at Moscow-(secretly)-censored, sent to ("Lufthansa Office") in Moscow. 14-day transit time.

Arrival Postmark:
 (Reverse)
 "Moscow, 31 December 1940"

Route:
 Kunming-Hami-Urumchi-Alma Ata-Atbasar-Magnitogorsk-Kasan-Moscow

CNC \$ 2.15...
0.50.. Single-weight (20 grams)
international letter-rate +
1.15 European 'Russia' Airmail-Rate +
0.50 Registration fee.
 (Validity: 1 June 1940 -22 March 1941)

REGISTERED & AT MOSCOW-(SECRETLY)-CENSORED
CHINA-MOSCOW WARTIME MAIL



**WORLD WAR II & ITS EFFECTS
1939-1945**

**1941.. China-France "Via America"..
Two Ocean Airmail**

BY 1941, OCCUPATION OF LYON BY GERMAN FORCES WAS COMPLETE, WITH FRENCH CENSORSHIP OF IN-BOUND FOREIGN MAIL IN EFFECT.



8 JANUARY 1941

Registered cover,
postmarked at Shanghai China, with route endorsement
"France via America"
sent to Lyon, France,
with British censorship at Hong Kong &
French Censorship at Lyon.

Probable Route:
Shanghai-Hong Kong-Manila-Guam-Midway Island-
Honolulu-San Francisco-New York-Horta-Lisbon-Lyon

Transit Postmarks:

(Reverse)

"Honolulu, 22 January 1941"

"New York, 27 January 1941"

Arrival Postmark:

(Reverse)

"Lyon, Rhone

**WARTIME DOUBLE-CENSORED REGISTERED
COMMERCIAL AIRMAIL CHINA-FRANCE**



Reverse

CNC 6.40...

**0.50.. International single-weight (20 grams) letter-rate +
5.40 (5 grams) Air surcharge + 0.50.. Registration fee.**

**WORLD WAR II & ITS EFFECTS
1939-1945**

**1941 ..
Wartime Europe/South America
'Via Siberia' Mail**

AS LONG AS THE 'UNITED STATES OF AMERICA' REMAINED NEUTRAL PERMITTING TRANS-SHIPMENT OF MAIL, GERMANY-ORIGIN MAIL SENT TO NORTH & SOUTH AMERICA USING THE 'VIA SIBERIA-JAPAN-USA' ROUTE WAS POSSIBLE.

**GERMANY-COLUMBIA
BANK MAIL**

15 MARCH 1941

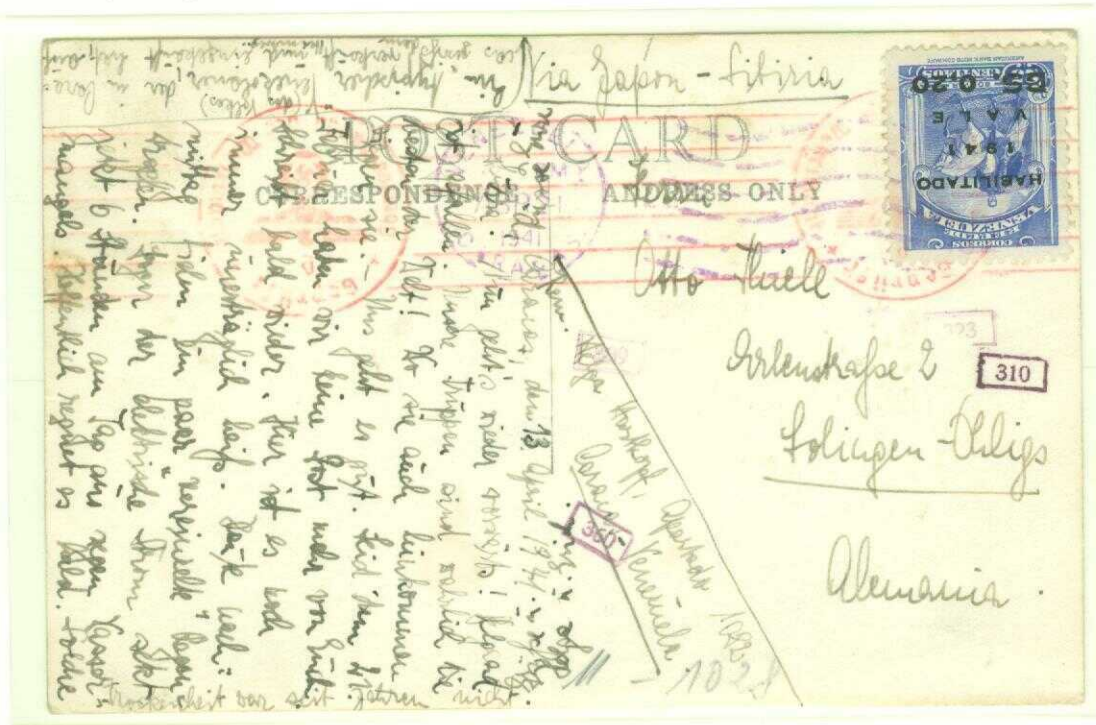
German-censored cover, postmarked at Hamburg, Germany, with route endorsement "Via Siberia-Japan" sent to Bogota, Columbia. 72-day transit time.

Arrival Postmark: (Reverse) "Bogota, 26 May 1941"

Probable Route: Hamburg-Berlin-Moscow-Irkutsk-Tschita-Charborowsk-Vladivostok (by sea) to Japan-San Francisco-Panama Canal-Cartagena-Bogota

**25 Pfennig...
Single-weight
international
letter-rate.**

**(Validity: 1 January
1925 - April 1945)**



**VENEZUELA-GERMANY
CIVILIAN MAIL**

13 APRIL 1941

German-censored view-card, postmarked at Caracas, Venezuela, with route endorsement "Via Japan-Siberia" sent to Solingen-Ohligs, Germany.

Probable Route: Caracas-Panama Canal-San Francisco-Yokohama-Vladivostok (by rail) Charborowsk-Tschita-Irkutsk-Moscow-Berlin-Solingen

**BS 0.20..
International
postcard-rate.**

**WORLD WAR II & ITS EFFECTS
1939-1945**

**1941.. Germany-China
Wartime Airmail to Moscow &
'Via Siberia' Rail Network to China**

**BETWEEN 1938-1941,
PRIOR TO THE GERMAN INVASION OF THE SOVIET UNION ON 22 JUNE 1941,
OVER 20,000 EUROPEAN REFUGEES OF
JEWISH FAITH FLED EUROPE FOR SHANGHAI, CHINA,
SINCE IT DID NOT REQUIRE VISA OR ENTRY PERMITS,**

**resulting in exchanges of mail between friends or relatives
in Europe with those refugees in China.**



30 JANUARY 1941

**Registered German-censored cover to Jewish-refugee 'David Pappenheimer',
former businessman of Munich, now residing in China,
postmarked at Munich, Germany, with route endorsement
"By Airmail to Moscow", sent to Shanghai. 32-day transit time.**

**Arrival Postmark:
(Reverse)**

"Shanghai, 2 March 1941"

80 Pfennig...

25 Pfg. UPU Single-Weight International Letter-Rate

+ 30 Pfg. registration fee + 25 Pfg. airmail-to-Moscow surcharge (5 grams)

**First-Day Cover for German-Italian Brotherhood-in-Arms
Commemorative Stamp Issue & Postmark**

Route:

- Munich-Berlin-Moscow by airmail**
- Moscow-Shanghai 'via Siberia' rail network**

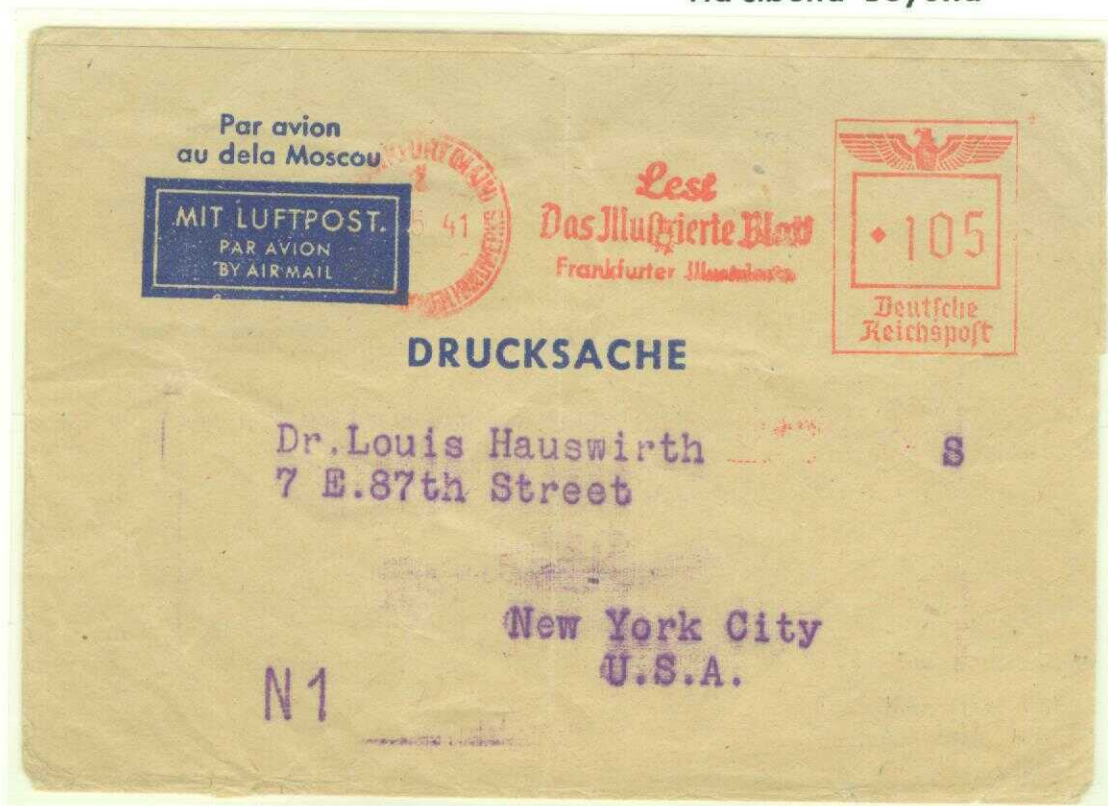
**WORLD WAR II & ITS EFFECTS
1939-1945**

**1941.. Germany-U.S.A.
Wartime Airmail to Moscow &
'Via Siberia' Beyond**

3 MAY 1941

Newspaper wrapper,
postmarked at
Frankfurt/Main,
Germany,
with route
endorsement
"Par avion au dela
Moscow",
sent to New York City.

**105 Pfennig...
5 Pfg.. Printed-Matter
(100 grams) +
100 Pfg..
Europe-Airmail
Surcharge
(100 grams)**



**27
FEBRUARY
1941**

Single-weight re-directed "Sara" cover, post-marked at Berlin, Germany, censored, resealed, endorsed "Via Siberia - Airmail to Moscow" sent to Cambridge Mass.

**35 Pfg...
25 Pfg..
Foreign
letter-rate
+
10 Pfg..
Airmail
Europe-
Surcharge**

**Probable Route:
Berlin- (by air) Moscow- (by rail) Irkutsk-Vladivostok- (by ship) Yokohama-
San Francisco & (by rail) Destination in U.S.A.**

**WORLD WAR II & ITS EFFECTS
1939-1945**

**1941.. Germany-China & U.S.A.
Wartime Judaica/Ghetto Mail**

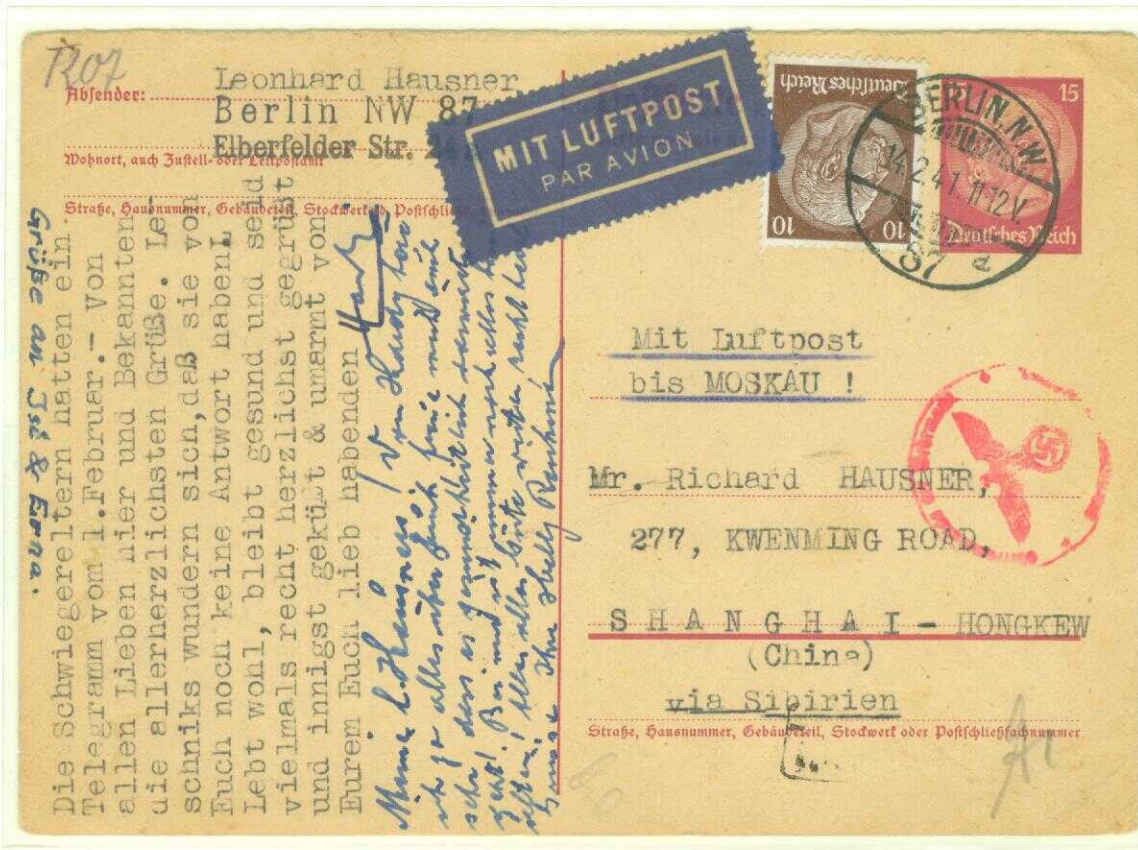
**AIRMAIL TO MOSCOW
& SURFACE TO
SHANGHAI GHETTO**

14 FEBRUARY 1941

**Postal-stationery card,
postmarked at Berlin,
censored, route
endorsed
"Airmail to Moscow &
via Siberia"
sent to Shanghai.**

**Probable Route:
(Airmail) Berlin-Moscow-
(Rail) to Irkutsk-Harbin-
Mukden-Tientsin-
Pukow-Shanghai**

**25 Pfg:
15 Pfg UPU
International Postcard
Rate +
10 Pfg. Europe-Airmail
Surcharge to Moscow**



**LITZMANNSTADT
GHETTO MAIL TO USA**

24 MARCH 1941

**Registered postal-
stationery return card,
censored & validated
by the ghetto's
"Älteste der Juden in
Litzmannstadt",
postmarked
Litzmannstadt
(Lodz = Lodsch),
German-occupied
Poland, censored at
Königsberg, Germany,
sent general delivery
to the 'American
Express Company' in
New York City.
44-day transit time.**

**Transit & Arrival
Postmarks:
"San Pedro, California,
May 2, 1941"
"New York Registry
Office,
May 7, 1941"**

**Probable Route:
Litzmannstadt-Königsberg-Moscow-Irkutsk-Vladivostok-
Yokohama-San Pedro-New York City**

**45 Pfg...
15 Pfg International Postcard Rate + 30 Pfg. Registration Fee.**

WORLD WAR II & ITS EFFECTS
1939-1945

1941 ..
Refused & Returned
German-China Mail

On 2 April 1940, a postal ordinance was issued regarding the content, the type of envelopes or postcards, indication of sender's address, etc., permitted for foreign-bound mail.
ANY MAIL NOT ADHERING TO REGULATIONS WAS CACHET STAMPED INDICATING THE VIOLATION AND RETURNED TO SENDER.

REFUSED POSTCARD

25 MAY 1941

German-censored viewcard, postmarked at Posen, Germany, with route endorsement "Via Siberia" sent to Manchouli, Manchukuo.

"The mailing of picture postcards to foreign destinations is not permitted."

15 Pfg..
International postcard-rate



REFUSED COVER UNDER ORDINANCE OF 2. APRIL 1940

27 MAY 1941

Censored cover, postmarked at Wuppertal-Langerfeld, Germany, with route endorsement "Via Siberia" sent to Shanghai, China.

25 Pfg..
International single-weight (20 grams) letter-rate.
(Validity: 1 January 1925 - April 1945)





TRIPLE-CENSORED COMMERCIAL MAIL TO CHINA

2 MAY 1941

Commercial cover,
postmarked at Frankfurt/Main, Germany,
with route endorsement
"Via Siberia"
sent to Shanghai, China,
incorrectly routed by sea, not 'Via Siberia'
resulting in triple censorship ..
Germany, France & Britain/Hong-Kong.
Transit time: 50 days.

Probable Route:
Frankfurt-Marseilles-Suez-Aden-Hanoi/Haiphong-
Hong-Kong-Shanghai

25 Pfennig...
Single-weight (20 grams) international letter-rate



Reverse

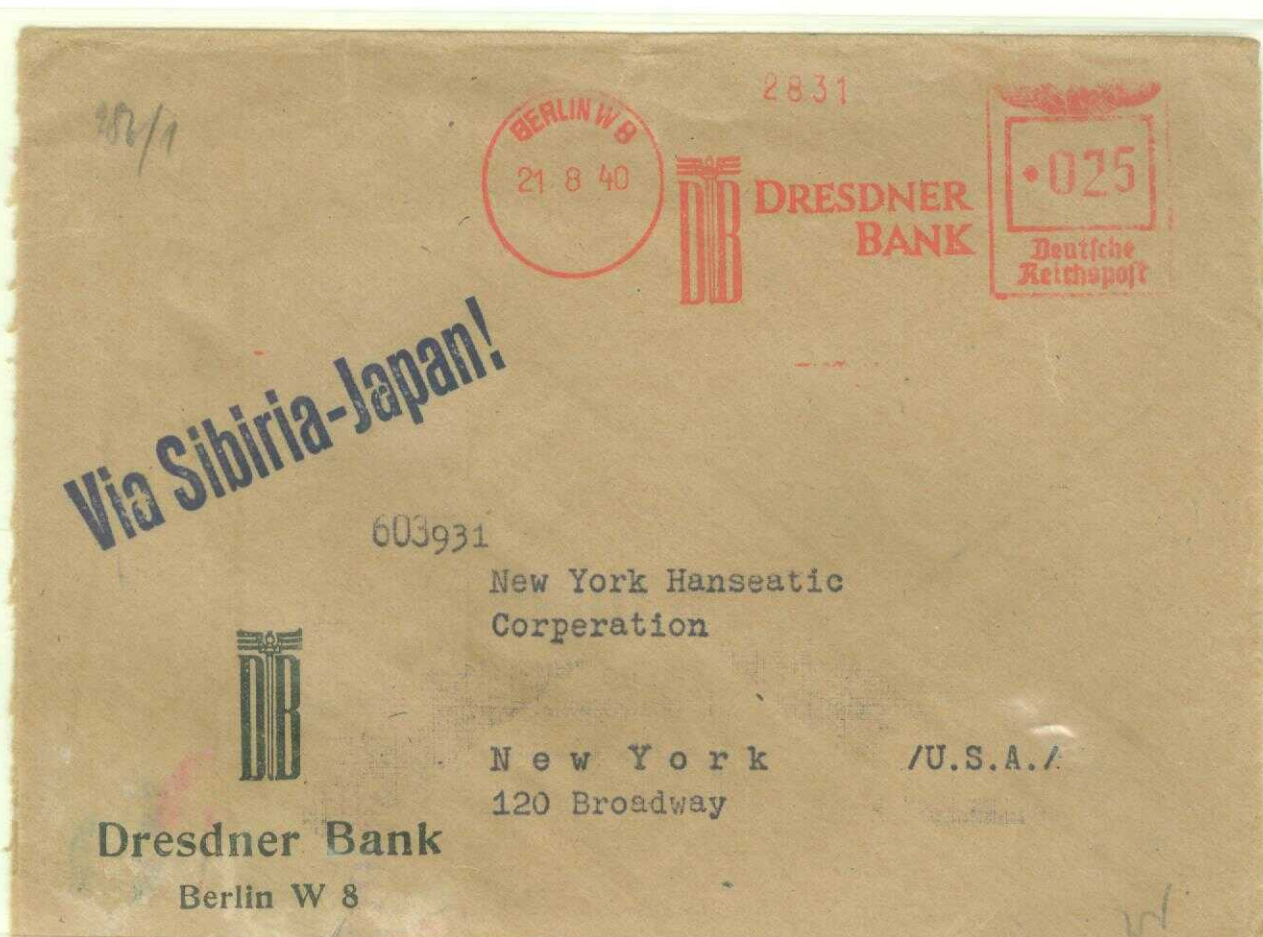
WORLD WAR II & ITS EFFECTS
1939-1945

1940 ..
Germany-USA Bank Mail

BERLIN-
NEW YORK
BANK MAIL

21 AUGUST
1940

Censored
cover,
postmarked
at Berlin,
with route
endorsement
"Via Siberia-
Japan"
sent to
New York
City.



Via Sibiria-Japan!

603931

New York Hanseatic
Corperation



Dresdner Bank
Berlin W 8

New York /U.S.A./
120 Broadway

478/2



5-97

Effektengeschäfte?
Fragen Sie die
DEUTSCHE BANK
Filiale Stuttgart
Ableitung Gymnasiumstrasse



STUTTGART-
CHICAGO BANK
MAIL

6 MARCH 1940

Censored cover,
postmarked at
Stuttgart,
with route
endorsement
"Via Japan-
Siberia",
sent to Chicago.

Herrn
Hans L e v i
4737 Ingleside Avenue
C h i c a g o /Illinois

U.S.A.

Via Sibirien - Japan!

Probable Routes:
Stuttgart-Berlin-
Moscow-Irkutsk-
Tschita-
Charborowsk-
Vladivostok-
(by sea) to Japan-
San Francisco-
(overland) to
Chicago or
New York City.

25 Pfennig...
Single-weight (20 grams) international letter-rate.
(Validity: 1 January 1925 - April 1945)

**WORLD WAR II & ITS EFFECTS
1939-1945**

**22 June 1941..
German Invasion of the
Soviet Union**

Despite having signed a non-aggression pact in August 1939, Germany initiated a surprise invasion of the Soviet Union from occupied Poland on 22 June 1941.

SUCH INVASION IMMEDIATELY CEASED ALL MAIL TRANSIT 'VIA SIBERIA' FROM/TO GERMANY AND MOST OF EUROPE.

**COMMERCIAL
MAIL PRIOR TO
CESSATION OF
'via Siberia'
SERVICE**

10 MARCH 1941

Registered commercial cover, postmarked at Shanghai, China, with route endorsement "Via Siberia", sent to Berlin, Germany. 19-day transit time.

**CNC 1.00 ...
0.50.. Single-weight international (20 grams) letter-rate +
0.50.. Registration fee
(Validity: 20 Sept. 1940 - 31 Oct. 1941)**



**LATE GHETTO MAIL
PRIOR TO CESSATION
OF
'Via Siberia' SERVICE**

30 MAY 1941

Reply postal-stationery card, postmarked at Oppeln, Germany, endorsed "China via Siberia", sent to Shanghai-Hongkew, China.

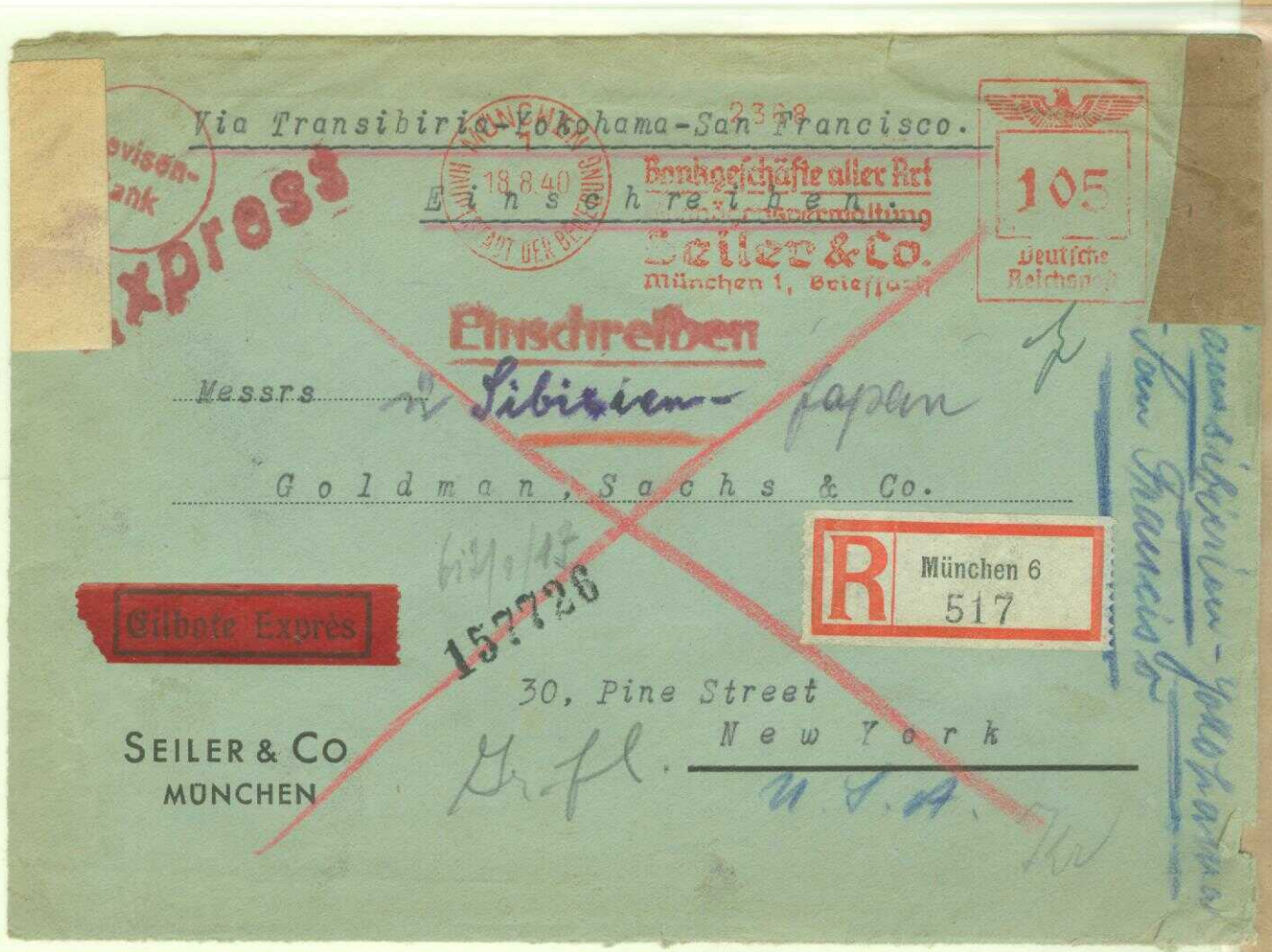
**15 Pfennig..
International
postcard-rate.**

**WORLD WAR II & ITS EFFECTS
1939-1945**

With the beginning of WW II in September 1939, all British Commonwealth countries, including Canada, were at war with Germany, necessitating eastern mail movement through the United States to Europe.

**IN ORDER TO AVOID FOREIGN CENSORSHIP IN CANADA OR BRITAIN,
GERMAN BANKS & BUSINESSES ENDORSED THEIR MAIL.**

**"VIA SIBERIA-JAPAN" or
"VIA SIBERIA CALIFORNIA-SERVICE
NOT VIA CANADA"**



**GERMAN-CENSORED 'REGISTERED & EXPRESS' BANK MAIL TO
THE UNITED STATES OF AMERICA**

18 AUGUST 1940

Bank cover, postmarked at Munich, Germany,
with route endorsement..

"Via Siberia-Japan"

sent to New York City. 44-day transit time.

Probable Route:

Munich-Berlin-Moscow-Irkutsk-Tschita-Charborowsk-Vladivostok-(by sea)
Tsuruga or Yokohama-San Francisco- (overland) to New York.

105 Pfennig...

**25 Pfg.. Single-weight (20 grams) international letter-rate +
30 Pfg.. Registration fee + 50 Pfg Express Mail**

(Validity: 1 January 1935 - April 1945)

1939-1941..
Germany-USA Bank Mail
"Via Siberia-Japan" & "California-Service, Not Canada"



DRESDNER
BANK



Herrn K 2110

Einschreiben!

*Otto Goese
c/o The Chase National Bank of the City of New-York*

**Sibirien-Japan
California Dienst
nicht über Canada**

46813



**Dresdner Bank
Berlin W 8**



*18 Pine Street
New-York, N.Y.
U.S.A.*

**GERMAN-CENSORED 'REGISTERED' BANK MAIL
TO THE UNITED STATES OF AMERICA**

8 FEBRUARY 1941

Registered bank cover,
postmarked Berlin, Germany,
with route endorsement..

*"Via Siberia-Japan
California Service Not via Canada"*
sent to New York City.
55-day transit time.

**Transit & Arrival Postmarks:
(Reverse)**

**"San Francisco, California
31 March 1941"**

**"New York Registry Division,
4 April 1941"**

Probable Route:

**Berlin-Moscow-Irkutsk-Tschita-Charborowsk-
Vladivostok- (by sea) to San Francisco-
(overland) to New York.**

70 Pfennig...

**40 Pfg.. Double-weight (40 grams) international
letter-rate + 30 Pfg.. Registration fee
(Validity: 1 January 1935 - April 1945)**

WORLD WAR II & ITS EFFECTS
1939-1945

22 June 1941..
German Invasion of the
Soviet Union

GERMAN MAIL DELIVERED IN THE SOVIET UNION
ON DAY OF THE INVASION



5 JUNE 1941

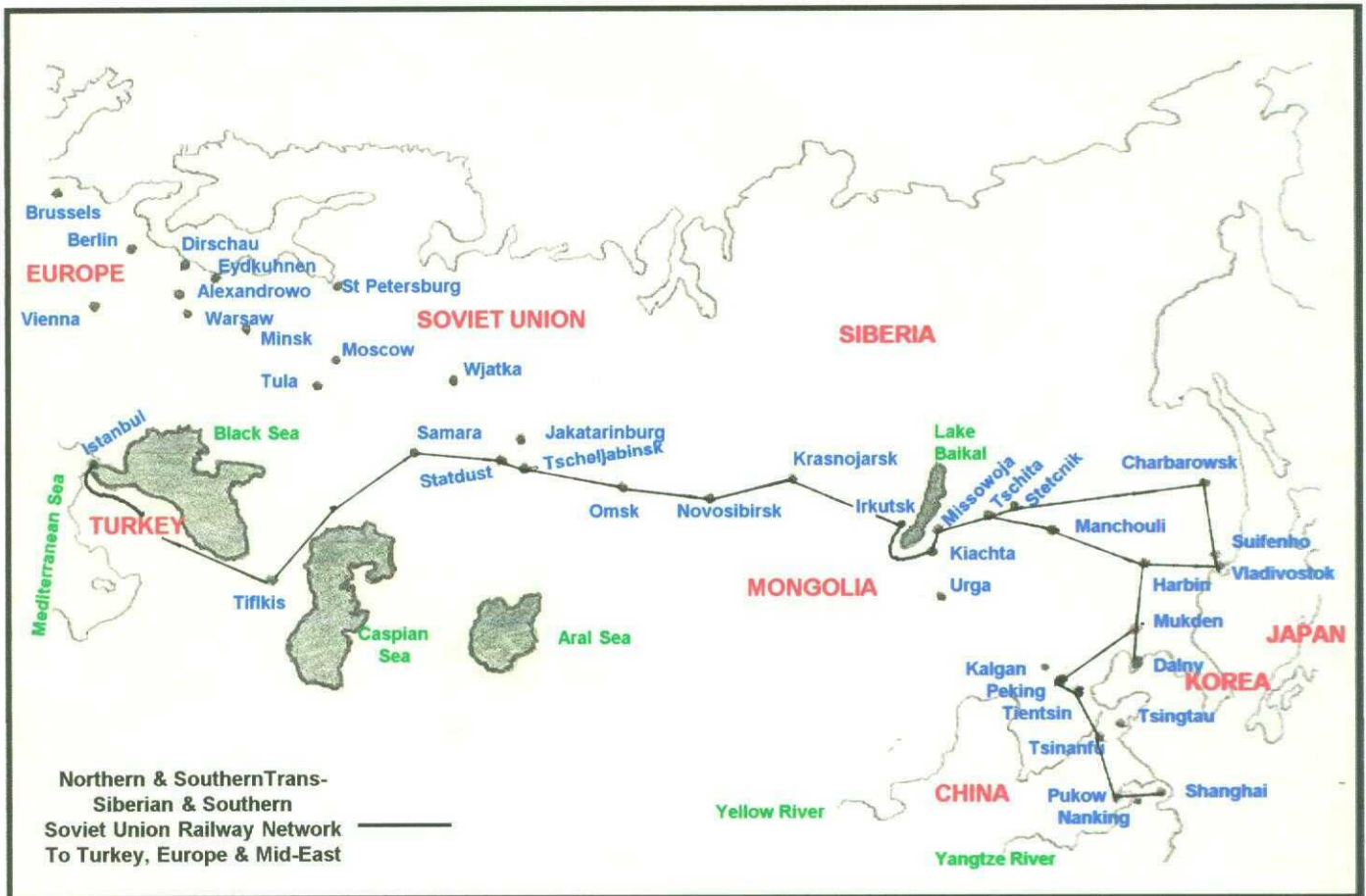
International postal-stationery card, railway-postmarked aboard
Train "Z.0449 ... Magdeburg-Osternberge",
sent to "Bugmilla Pukhalsk" at Belostok/Bialystok, Byelorussian SSR
(territory annexed from Poland by the Soviet Union in 1939),
subsequently censored at Berlin and released,
arriving at destination on 21 June 1941
with delivery on 22 June 1941.

15 Pfennig..
International postcard-rate.

WORLD WAR II & ITS EFFECTS

1939-1945

**TRANS-SIBERIAN RAIL NETWORK
FOR MOVEMENT OF FAR EAST MAIL TO
NON-BELLIGERENT EUROPE & TURKEY
AFTER THE INVASION OF THE SOVIET UNION ON
22 JUNE 1941**



With the invasion of the Soviet Union on 22 June 1941, all heretofore mail transit to/from the Far East through Moscow to Berlin & Western Europe ceased while war conditions prevailed along most of the eastern border of the Soviet Union.

MOVEMENT OF MAIL TO NON-BELLIGERENT EUROPE & TURKEY WAS NOW ONLY POSSIBLE USING THE TRANS-SIBERIAN RAIL ROUTE TO SAMARA CONNECTING WITH THE SOUTHERN SOVIET UNION RAILWAY NETWORK TO TIFLIS & TURKEY..

"VIA SIBERIA-TIFLIS-ISTANBUL"

WORLD WAR II & ITS EFFECTS
1939-1945

1941.. Germany-China
'LATI' Airmail

UNABLE TO ROUTE MAIL 'VIA SIBERIA' TO CHINA BECAUSE OF
HOSTILITIES WITH THE SOVIET UNION, THE GERMAN POST OFFICE
FORWARDED AIRMAIL WITH ITALIAN 'LATI AIRLINES'
(Linee Aeree Transcontinentali Italiane)
MOVING MAIL THROUGH SOUTH AMERICA TO CHINA
BETWEEN JUNE-DECEMBER 1941.



GERMANY-CHINA BANK MAIL SENT VIA SOUTH AMERICA THROUGH 'LATI' AIRLINES
WITH INTERRUPTION & BRITISH-CENSORSHIP AT BERMUDA

27 AUGUST 1941

German & British censored cover,
postmarked at Berlin-Friedenau, Germany, sent to Tientsin, China, with
air surcharge for mail using 'LATI' Airlines, unsuccessfully attempting
to avoid British censorship at Bermuda but released for forwarding to China.

Probable Route:

Berlin-Rome-Rio de Janeiro-Buenos Aires-Lima-Cristobal-Mexico City-New York-
Bermuda-New York-San Francisco- (by sea) to Japan & Shanghai- (rail) to Tientsin

240 Pfennig...

25 Pfg.. International single-weight (20 grams) letter-rate +
215 Pfg.. Airmail Surcharge (5 grams) for LATI-flown mail